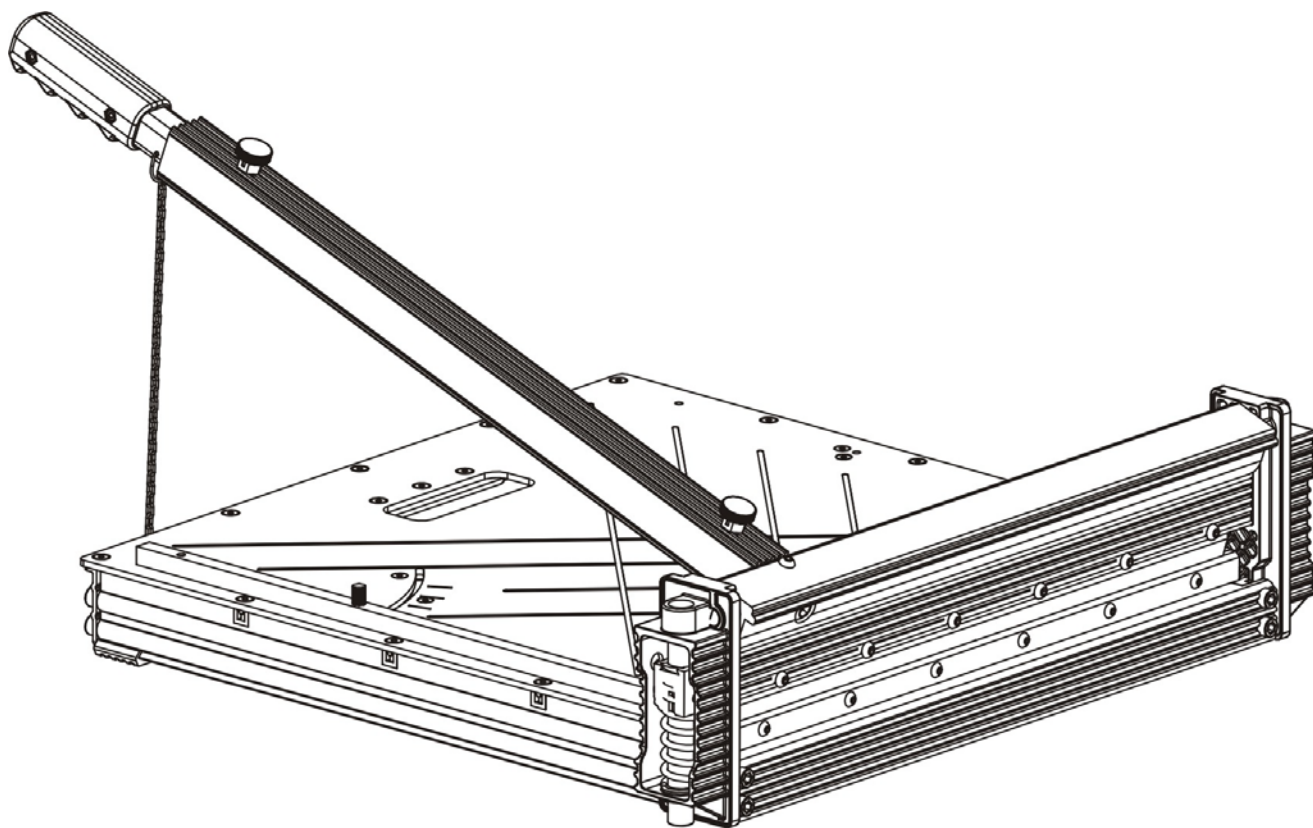


# D-CUT<sup>®</sup>

## OPERATION MANUAL

---

D-Cut Multi-Flooring Cutter MH-460





**WARNING: FAILURE TO FOLLOW THESE RULES MAY RESULT IN SERIOUS INJURY! USING THIS MACHINE WITH RESPECT AND CAUTION WILL CONSIDERABLY LESSEN THE POSSIBILITY OF PERSONAL INJURY.**

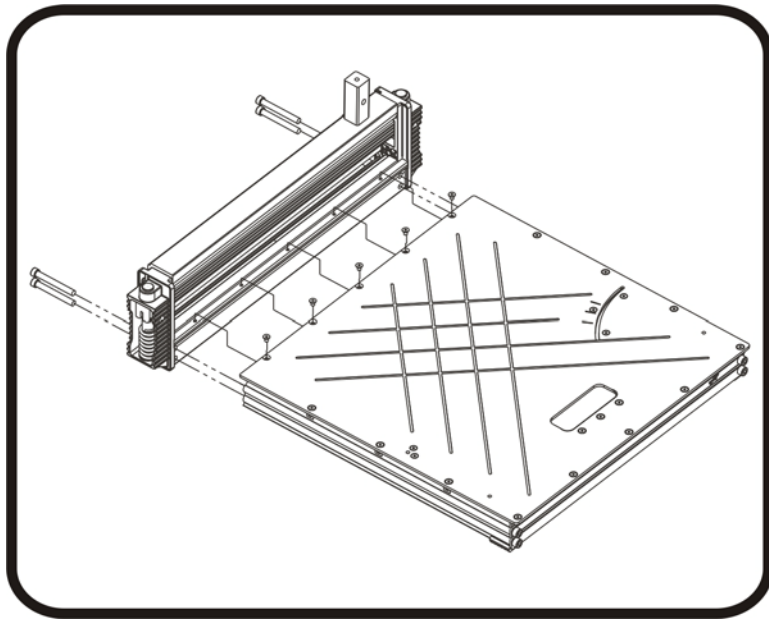
---

## **SAFETY RULES FOR THE MULTI-FLOORING CUTTER**

- 1. READ AND UNDERSTAND THIS INSTRUCTION MANUAL BEFORE OPERATING THE D-CUT MULTI-FLOORING CUTTERS.**
2. If you are not thoroughly familiar with the operation of D-Cut Multi-flooring Cutter, obtain advice from a qualified instructor or call 800-982-3434 USA
3. Stay alert. Do not operate while under the influence of drugs, alcohol, or medication.
4. Always wear safety approved eye protection with side shields(ANSI Z87.1)
5. Keep work area free of debris.
6. Keep children and unauthorized persons away from the D-Cut Multi-flooring Cutter and work area.
7. Make sure tool is secure. Operate only on a firm substrate or solid stand.
8. Use the right tool. Do not force the D-Cut Multi-flooring Cutter or use it for a job for which it was not designed; use only on approved materials.
9. Keep the blade sharp. A dull blade will not perform properly.
10. Always keep hands away from blade while operating or carrying the cutter.
11. Do not alter or misuse this tool. The D-Cut Multi-flooring Cutter is precision built; modifications not specified in this manual may result in a dangerous and unsafe environment.
12. Maintain the D-Cut Multi-flooring Cutter with care. Keep Blade sharp and clean. Follow instructions for changing accessories.
13. Use only recommended accessories. The use of improper accessories may be hazardous and cause injuries.
14. Never leave the D-Cut Multi-flooring Cutter unattended. Secure the handle with the lock chain when not in use

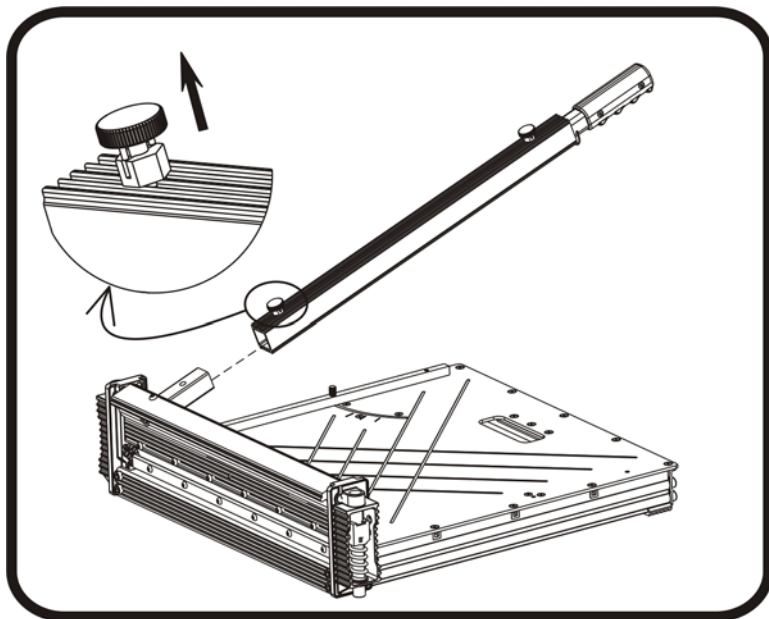


# SET UP



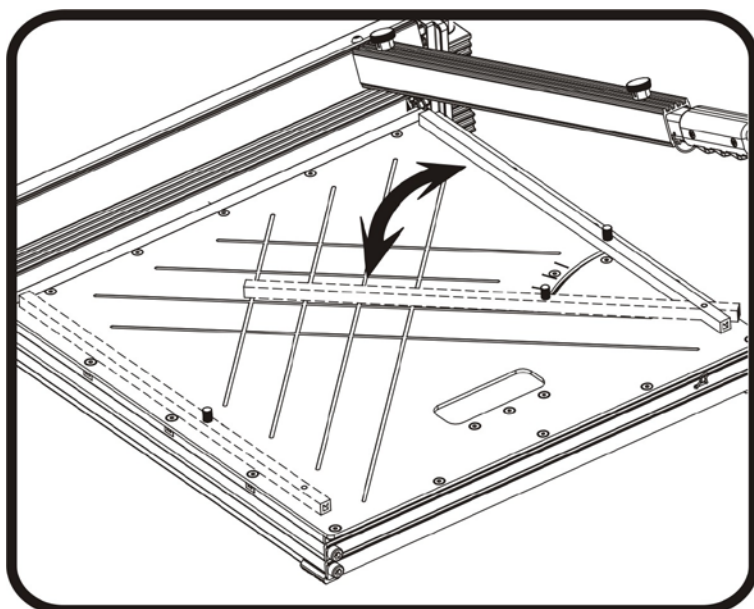
**Installation of the Cutter (1)**  
Install the table to the cutter base with provided screws and bolts as shown.

**Warning:** Do not put your fingers against the sharp edge of the blade at any time.



**Installation of the Cutter (2)**  
Pull up the lock pin on the aluminum handle as show and insert the handle into the handle base as shown.

**Warning:** Do not put your fingers against the sharp edge of the blade at any time.

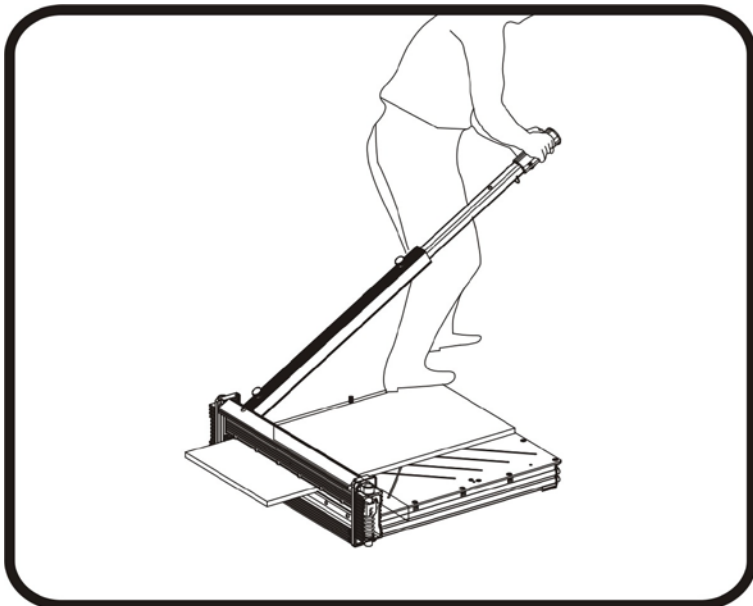


**Cutting Preparation**  
Adjust the angle attachment to desired angle as needed.

The angle attachment can be used on left side of the table as shown.

**Warning:** Do not put your fingers against the sharp edge of the blade at any time.

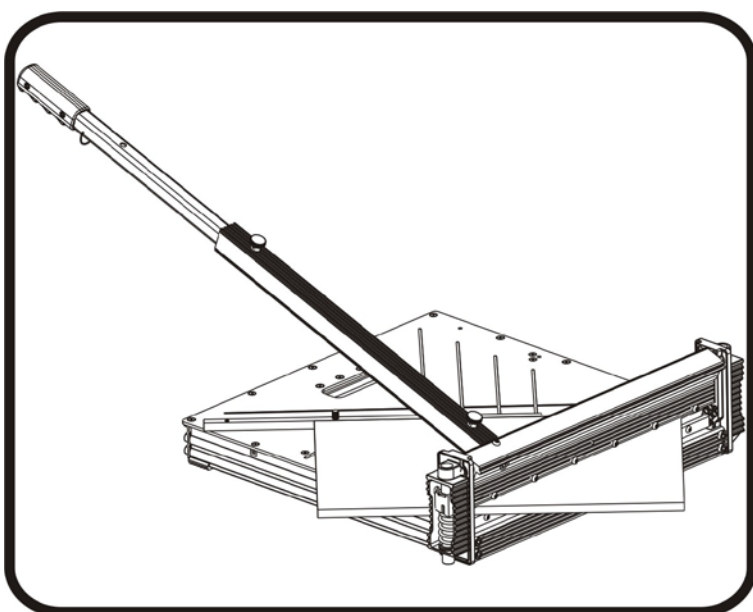
# CUTTING



## **Straight Cutting**

Insert material between the cutting blade and the base, flush with the angle attachment as shown and hold the material with foot then push handle down to complete a cut.

**Warning:** Maintain control of the handle. Do not allow handle to slam back after making a cut.



## **45° Cutting**

Adjust the angle attachment to 45°. Insert material between the cutting blade and the base, against the angle attachment as shown, then push the handle down to complete a cut.

**Warning:** Maintain control of the handle. Do not allow handle to slam back after making a cut.

**Warning:** Do not put your fingers against the sharp edge of the blade at any time.



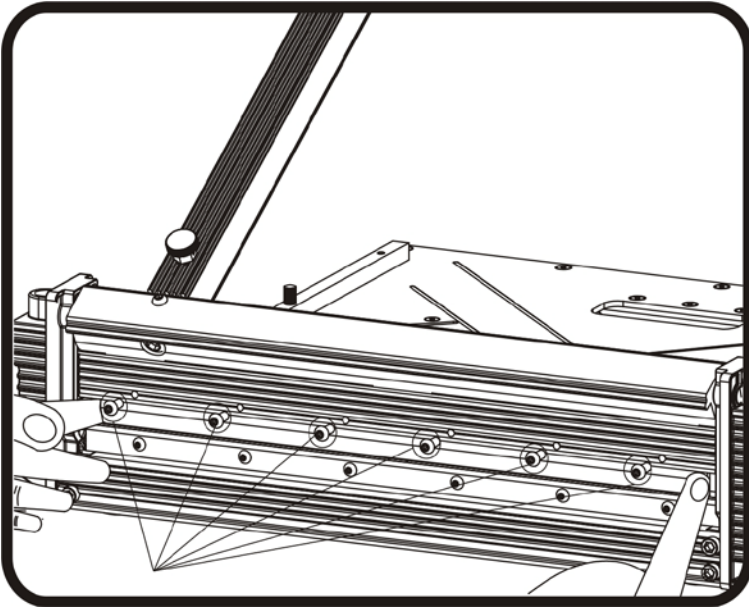
# MAINTENANCE

## Changing the Blade

Use the provided Allan wrench to remove the six screws, then hold the blade by each end and carefully remove the blade out of the blade holder.

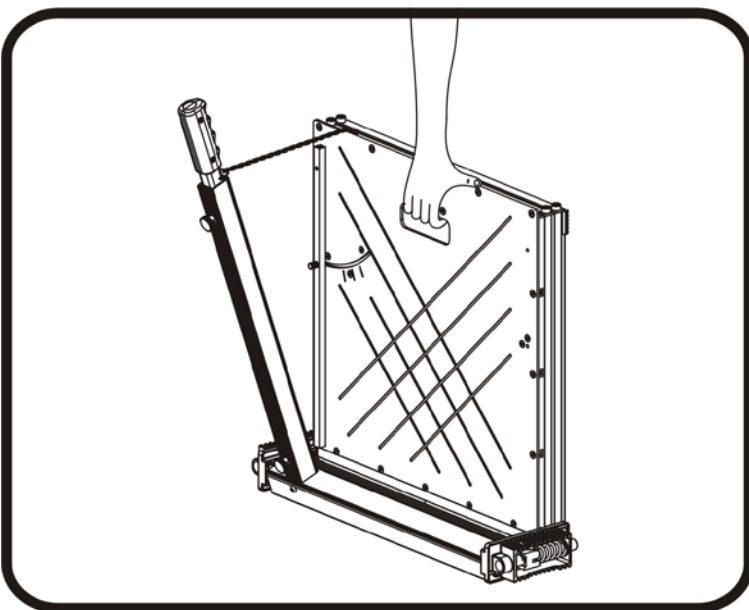
**Note:** The flat side of the blade faces the table.

**Warning:** Do not put your fingers against the sharp edge of the blade at any time.

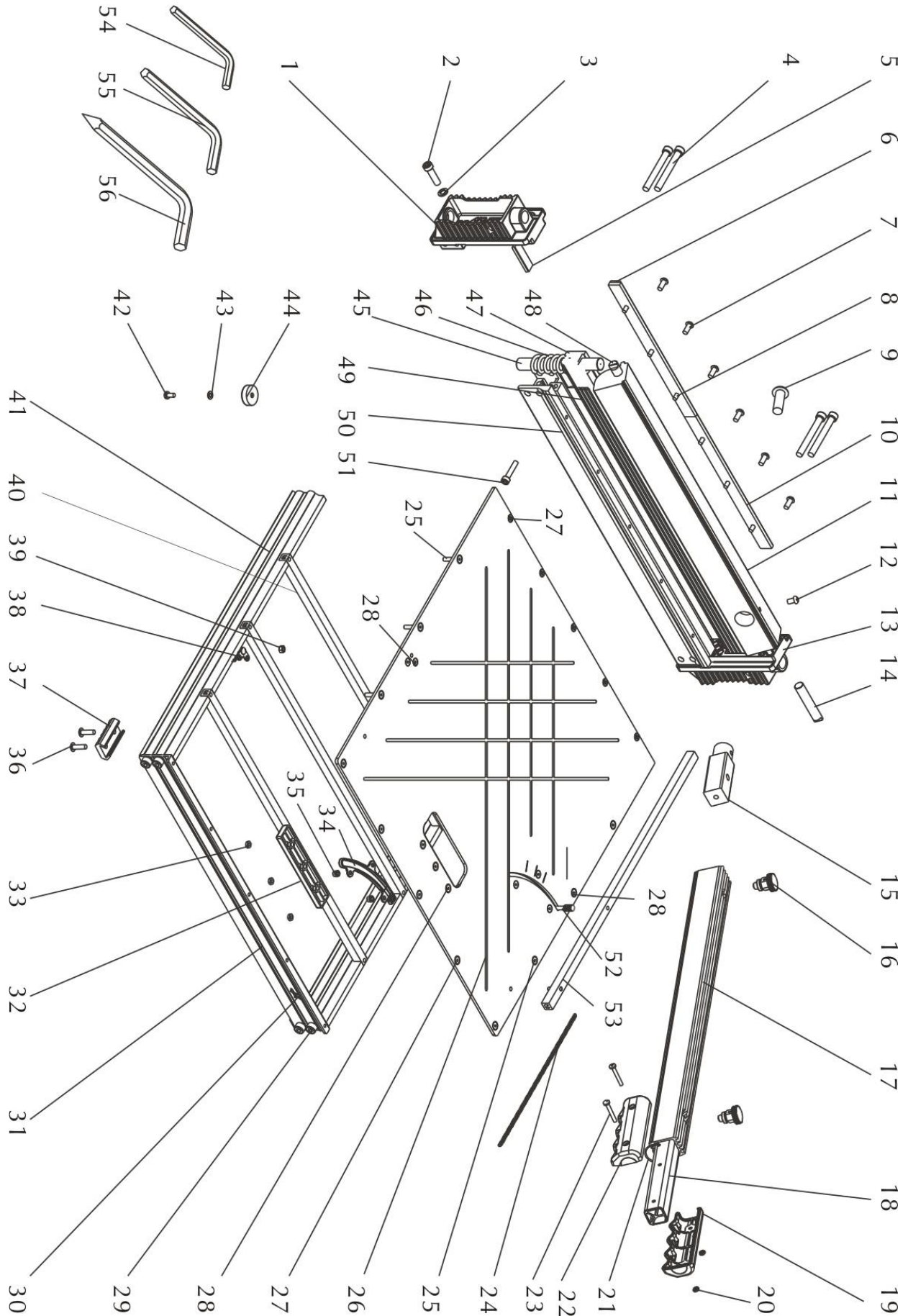


## Carry

Hook the chain to the ring on the handle and carry the cutter as shown.



# PART LIST





# PART LIST

	Parts	Q'ty		Parts	Q'ty
1	Side Frame A	1	29	Hex Head Screw M8 × 8	4
2	Customized Bolt M8	2	30	Hook B	1
3	Spring Washer Φ8	2	31	End Table Frame	1
4	Hex Head Bolt M8 × 66	4	32	Carrying Handle	1
5	Nylon Board	3	33	Thin Nut M5	3
6	Nylon Bar Holder	1	34	Nut Curve Locating Slot	1
7	Hex Head Screw M6 × 14	6	35	Nylon Lock Nut M5	5
8	Hex Head Screw M5 × 16	6	36	Blind Rivet Φ5	4
9	Hex Head Screw M12 × 30	1	37	Rubber Feet-1	2
10	Nylon Bar	2	38	Nut Base	1
11	Aluminum Eccentric Cam	1	39	Hex Nut M5	2
12	Hex Head Screw M5 × 10	1	40	Cross Bar	3
13	Side Frame B	1	41	Working Table Frame	2
14	Rotating Shaft A	1	42	Cross Head Screw M5 × 10	2
15	Handle Base	1	43	Plain Washer Φ5	2
16	Pull Pin	2	44	Rubber Feet-2	2
17	Handle-1	1	45	Guide Rod	2
18	Handle-2	1	46	Spring	2
19	Right ABS Handle	1	47	Blade Holder	1
20	Thin Nut M4	2	48	Rotating Shaft -B	1
21	Hook A	1	49	Blade	1
22	Left ABS Handle	1	50	Blade Cutting Base	1
23	Cross Head Screw M4 × 31	2	51	Cross Head Screw M6 × 16	2
24	Chain	1	52	Knurled Pin M5	1
25	Hex Head Screw M5 × 20	6	53	Cutting Guide	1
26	Working Table	1	54	Allan Wrench M5	1
27	Hex Head Screw M5 × 8	10	55	Allan Wrench M6	1
28	Hex Head Screw M5 × 12	8	56	Allan Wrench M8	1