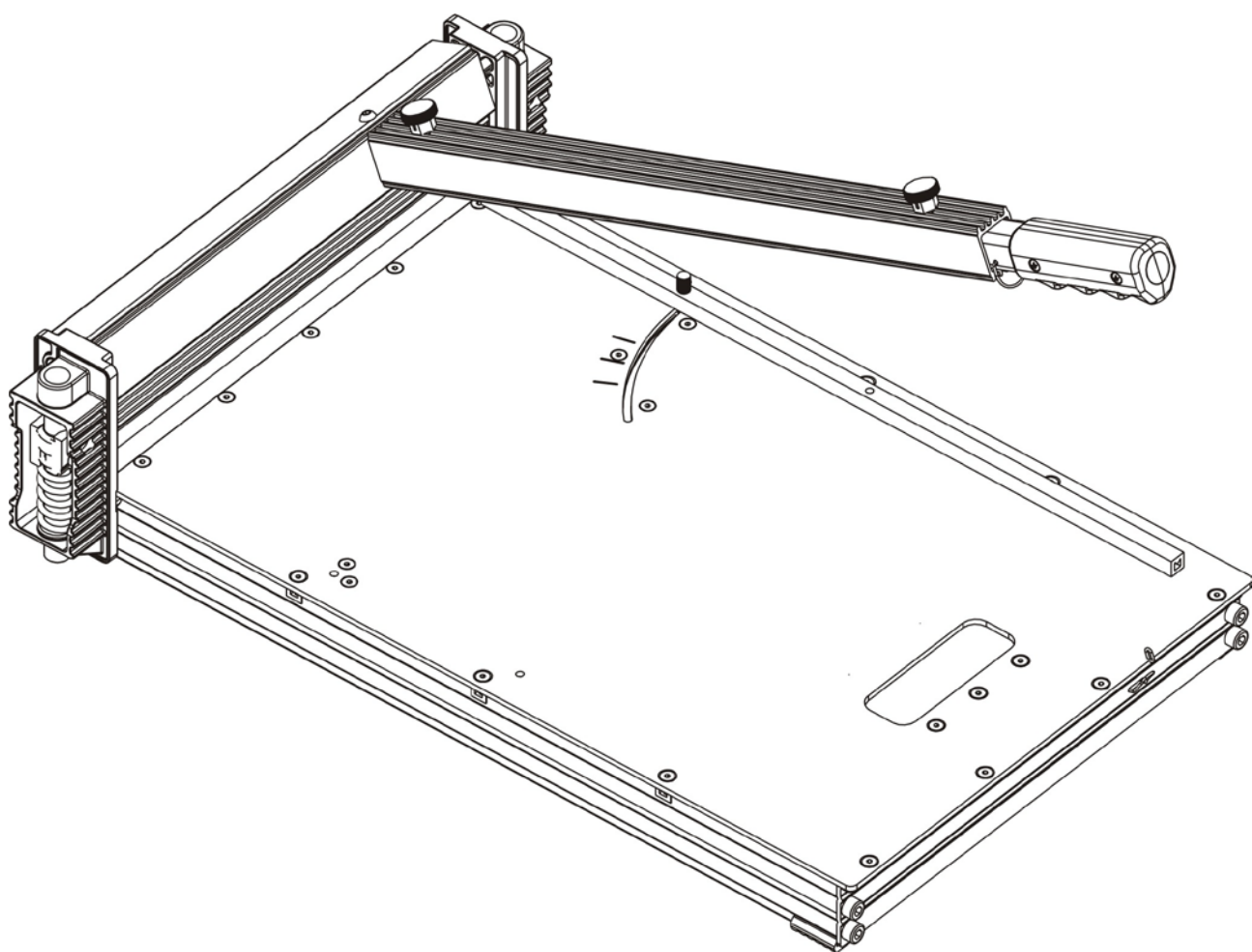


D-CUT[®]

OPERATION MANUAL

D-Cut Multi-Flooring Cutter MH-330





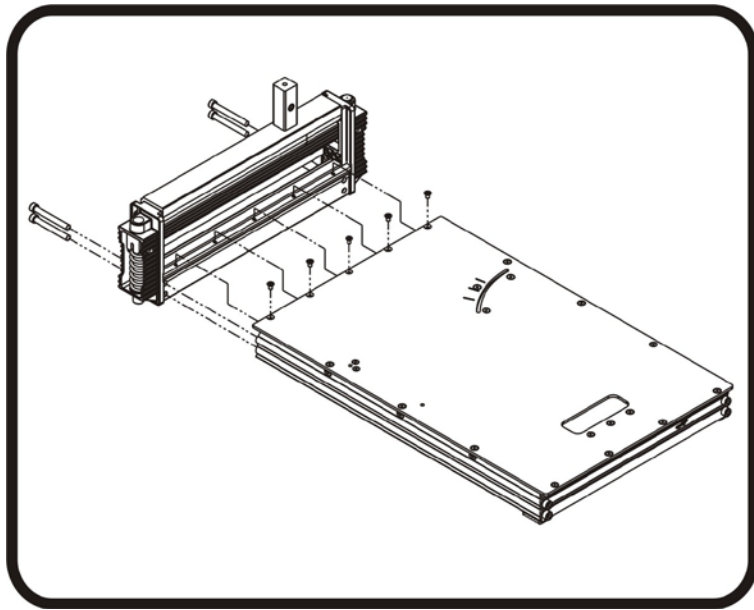
WARNING: FAILURE TO FOLLOW THESE RULES MAY RESULT IN SERIOUS INJURY! USING THIS MACHINE WITH RESPECT AND CAUTION WILL CONSIDERABLY LESSEN THE POSSIBILITY OF PERSONAL INJURY.

SAFETY RULES FOR THE MULTI-FLOORING CUTTER

- 1. READ AND UNDERSTAND THIS INSTRUCTION MANUAL BEFORE OPERATING THE D-CUT MULTI-FLOORING CUTTERS.**
2. If you are not thoroughly familiar with the operation of D-Cut Multi-flooring Cutter, obtain advice from a qualified instructor or call 800-982-3434 USA
3. Stay alert. Do not operate while under the influence of drugs, alcohol, or medication.
4. Always wear safety approved eye protection with side shields(ANSI Z87.1)
5. Keep work area free of debris.
6. Keep children and unauthorized persons away from the D-Cut Multi-flooring Cutter and work area.
7. Make sure tool is secure. Operate only on a firm substrate or solid stand.
8. Use the right tool. Do not force the D-Cut Multi-flooring Cutter or use it for a job for which it was not designed; use only on approved materials.
9. Keep the blade sharp. A dull blade will not perform properly.
10. Always keep hands away from blade while operating or carrying the cutter.
11. Do not alter or misuse this tool. The D-Cut Multi-flooring Cutter is precision built; modifications not specified in this manual may result in a dangerous and unsafe environment.
12. Maintain the D-Cut Multi-flooring Cutter with care. Keep Blade sharp and clean. Follow instructions for changing accessories.
13. Use only recommended accessories. The use of improper accessories may be hazardous and cause injuries.
14. Never leave the D-Cut Multi-flooring Cutter unattended. Secure the handle with the lock chain when not in use.

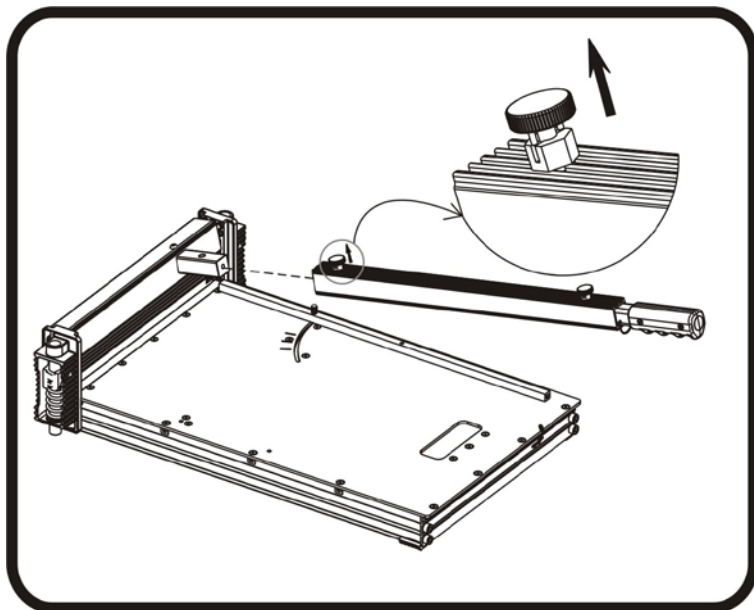


SET UP



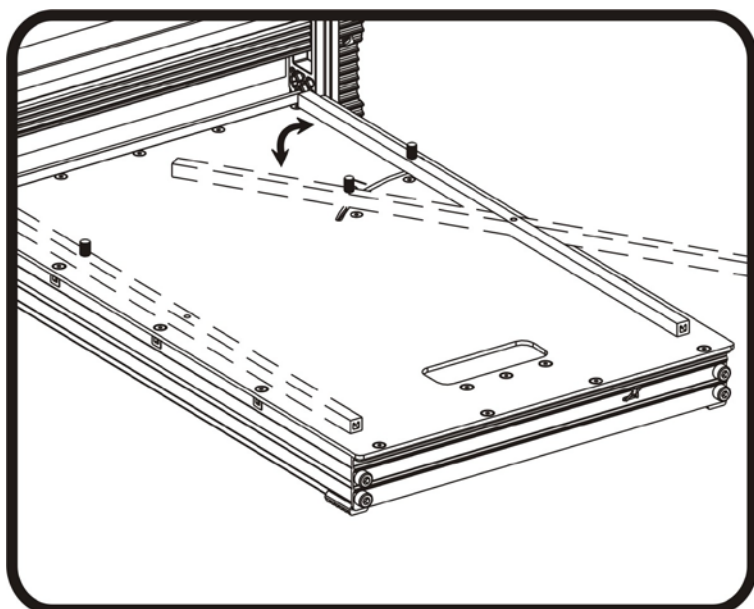
Installation of the Cutter (1)
Install the table to the cutter base with the provided screws and bolts as shown.

Warning: Do not put your fingers against the sharp edge of the blade at any time.



Installation of the Cutter (2)
Pull up the lock pin on the aluminum handle as shown and insert the handle into the handle base as shown.

Warning: Do not put your fingers against the sharp edge of the blade at any time.



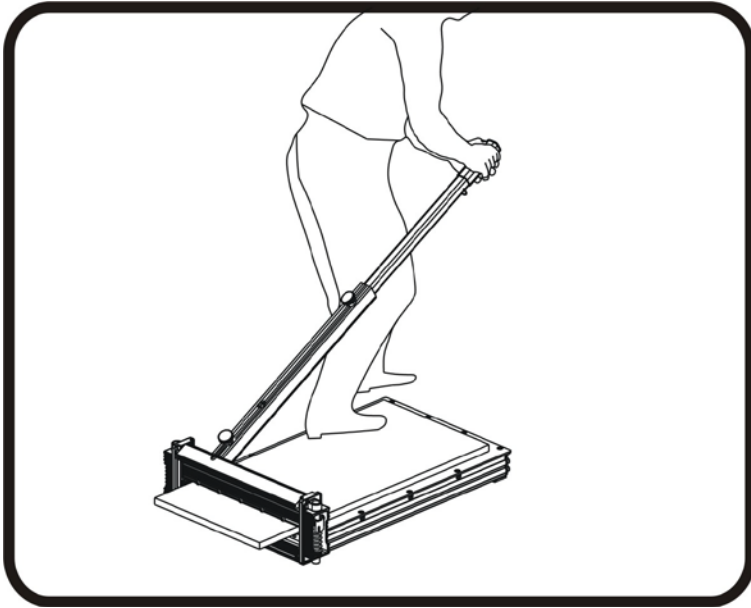
Cutting Preparation

Adjust the angle attachment to desired angle as needed.

The angle attachment can be used on left side of the table as shown.

Warning: Do not put your fingers against the sharp edge of the blade at any time.

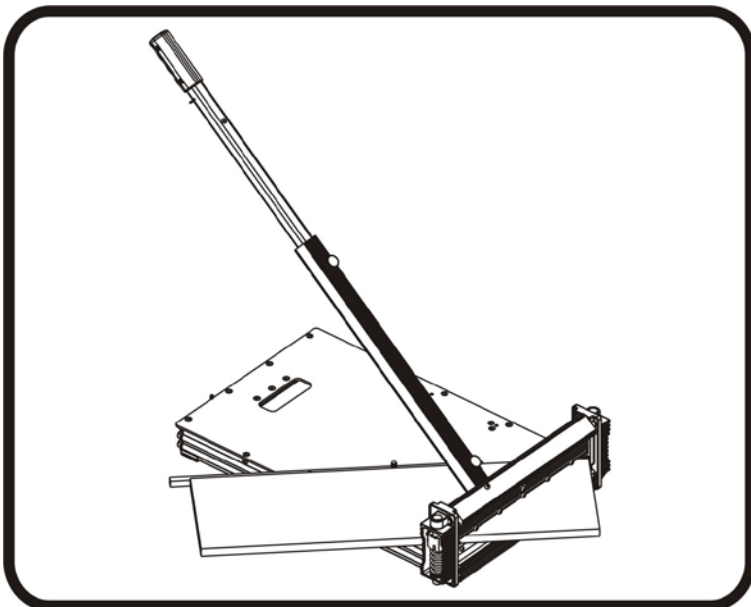
CUTTING



Straight Cutting

Insert material between the cutting blade and the base, flush with the angle attachment as shown and hold the material with foot then push handle down to complete a cut.

Warning: Maintain control of the handle. Do not allow handle to slam back after making a cut.



45° Cutting

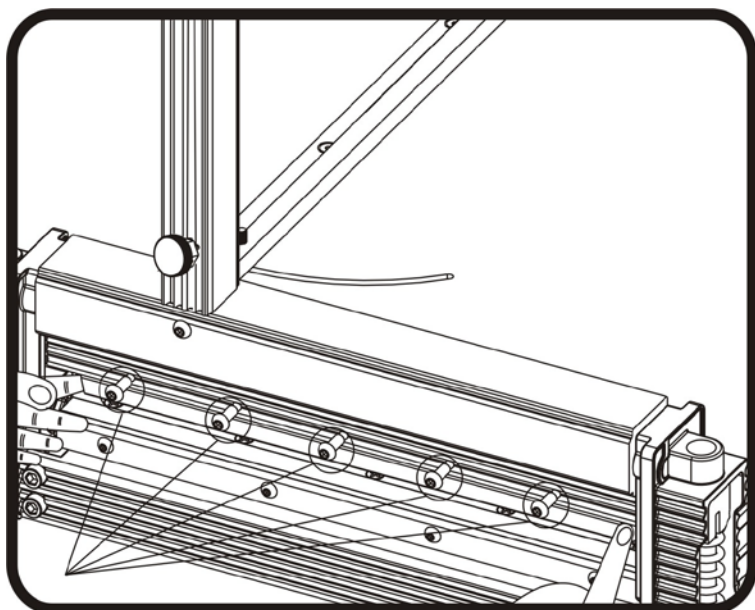
Adjust the angle attachment to 45°. Insert material between the cutting blade and the base, against the angle attachment as shown, then push the handle down to complete a cut.

Warning: Maintain control of the handle. Do not allow handle to slam back after making a cut.

Warning: Do not put your fingers against the sharp edge of the blade at any time.



MAINTENANCE

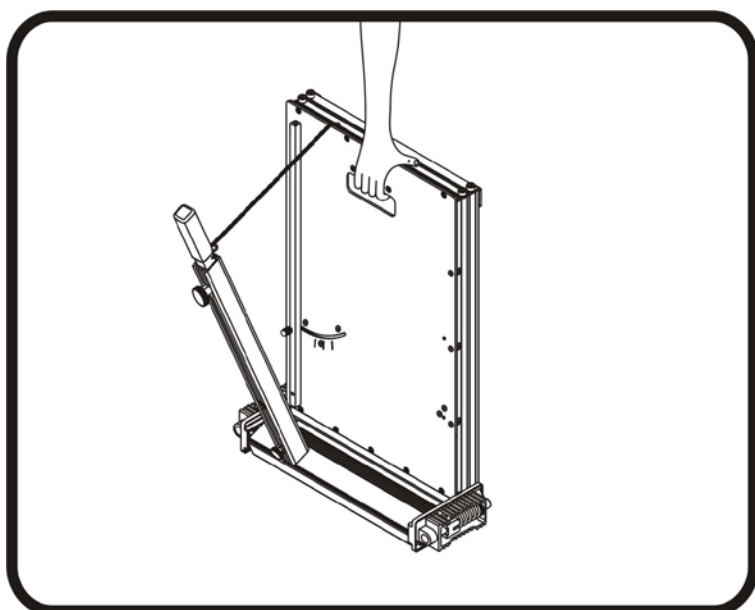


Changing the Blade

Use the provided Allen wrench to remove the five screws, then hold the blade by each end and carefully remove the blade out of the blade holder.

Note: The flat side of the blade faces the table.

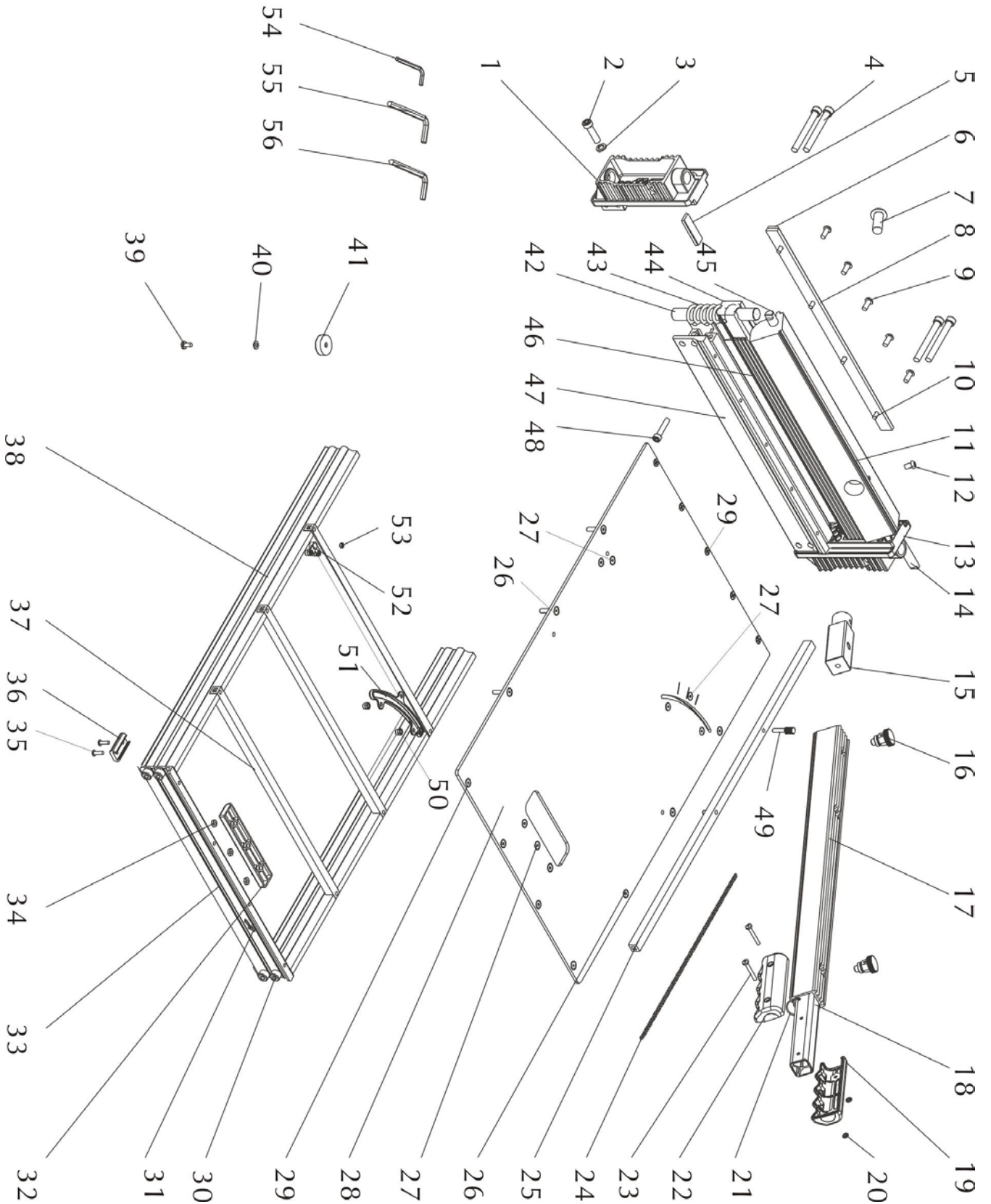
Warning: Do not put your fingers against the sharp edge of the blade at any time.



Carry

Hook the chain to the ring on the handle and carry the cutter as shown.

PART LIST





PART LIST

	Parts	Q'ty		Parts	Q'ty
1	Side Frame A	1	29	Hex head Screw M5 × 8	9
2	Customized Bolt M8	2	30	Hex Head Screw M8 × 8	4
3	Spring Washer Φ8	2	31	Hook-2	1
4	Hex Head Bolt M8 × 66	4	32	Carrying Handle	1
5	Nylon Board	2	33	End Table Frame	1
6	Nylon Bar Holder	1	34	Thin Nut M5	3
7	Hex Head Screw M12 × 30	1	35	Blind Rivet Φ5	4
8	Nylon Bar	1	36	Rubber Feet-1	2
9	Hex Head Screw M6 × 12	5	37	Cross Bar	3
10	Hex Head Screw M5 × 16	4	38	Working Table Frame	2
11	Aluminum Eccentric Cam	1	39	Cross Head Screw M5 × 10	2
12	Hex Head Screw M5 × 10	1	40	Plain Washer Φ5	2
13	Side Frame B	1	41	Rubber Feet-2	2
14	Rotating Shaft A	1	42	Guide Rod	2
15	Handle Base	1	43	Spring	2
16	Pull Pin	2	44	Blade Holder	1
17	Handle-1	1	45	Rotating Shaft B	1
18	Handle-2	1	46	Blade	1
19	Right ABS Handle	1	47	Blade Cutting Base	1
20	Thin Nut M4	2	48	Cross Head Screw M6 × 16	2
21	Hook A	1	49	Knurled Pin M5	1
22	Left ABS Handle	1	50	Nylon Lock Nut M5	5
23	Cross Head Screw M4 × 31	2	51	Nut Curve Locating Slot	1
24	Chain	1	52	Nut Base	1
25	Cutting Guide	1	53	Hex Nut M5	2
26	Hex Head Screw M5 × 20	6	54	Allan Wrench M5	1
27	Hex Head Screw M5 × 12	8	55	Allan Wrench M6	1
28	Working Table	1	56	Allan Wrench M8	1



MH-230/ MH-330 Cutting Capacity Chart

WOOD FLOORING	Janka Rate	MH-230	MH-330
		Limit on Engineered Wood Flooring	Limit on Engineered Wood Flooring
Eastern White Pine	380	Yes	Yes
Basswood	410	Yes	Yes
White Pine	420	Yes	Yes
Hemlock	500	Yes	Yes
Chestnut	540	Yes	Yes
Larch	590	Yes	Yes
Douglas Fir	660	Yes	Yes
Southern Yellow Pine (Loblolly and Shortleaf)	690	Yes	Yes
Shedua	710	Yes	Yes
Sycamore	770	Yes	Yes
Parana	780	Yes	Yes
Lacewood / Leopardwood	840	Yes	Yes
Southern Yellow Pine (Longleaf)	870	Yes	Yes
Cedar	900	Yes	Yes
Paper Birch	910	Yes	Yes
Boire	940	Yes	Yes
Black Cherry / Imbuia	950	Yes	Yes
Sakura	995	Yes	Yes
Teak	1000	Yes	Yes
Black Walnut	1010	Yes	Yes
Boreal	1023	Yes	Yes
Makore	1100	Yes	Yes
Brazilian Eucalyptus / Rose Gum	1125	Yes	Yes
Cocobolo	1136	Yes	Yes
Carbonized Bamboo (represents one species)	1180	Yes	Yes
Heart Pine	1225	No	Yes
Movingui	1230	No	Yes
Yellow Birch	1260	No	Yes
Carribbean Heart Pine	1280	No	Yes
Red Oak (Northern)	1290	No	Yes
American Beech	1300	No	Yes
Ash (White)	1320	No	No
Ribbon Gum	1349	No	No
Tasmanian Oak	1350	No	No
White Oak	1360	No	No
Australian Cypress	1375	No	No
Natural Bamboo (represents one species)	1380	No	No
Coffee Bean	1390	No	No
Hard Maple / Sugar Maple	1450	No	No
Sweet Birch	1470	No	No

Curupixa	1490	No	No
Sapele / Sapelli	1510	No	No
Kambala	1540	No	No
Peroba	1557	No	No
True Pine / Timborana	1570	No	No
Zebrawood	1575	No	No
Tualang	1624	No	No
Wenge / Red Pine	1630	No	No
Highland Beech	1686	No	No
Locust	1700	No	No
Kempas	1710	No	No
Merbau	1712	No	No
Blackwood	1720	No	No
African Padauk	1725	No	No
Rosewood	1780	No	No
Bangkirai	1798	No	No
Afzelia / Doussie	1810	No	No
Hickory / Pecan / Satinwood	1820	No	No
Goncalo Alves / Tigerwood	1850	No	No
Purpleheart	1860	No	No
Jarrah	1910	No	No
Amendoim	1912	No	No
Merbau	1925	No	No
Tallowwood	1933	No	No
Cameron	1940	No	No
Bubinga	1980	No	No
Sydney Blue Gum	2023	No	No
Karri	2030	No	No
Brushbox	2135	No	No
Pradoo	2170	No	No
Santos Mahogany / Bocote / Cabreuva	2200	No	No
Mesquite	2345	No	No
Brazilian Cherry / Jatoba	2350	No	No
Spotted Gum	2473	No	No
Red Mahogany / Turpentine	2697	No	No
Bloodwood	2900	No	No
Angelim Pedra	3040	No	No
Brazilian Redwood / Paraju	3190	No	No
Ebony	3220	No	No
Cumaru / Brazilian Teak	3540	No	No
Ipe / Brazilian Walnut / Lapacho	3684	No	No

Strictly follow this Cutting Capability Chart. Any attempt to cut flooring harder than what is listed may cause personal injury as well as damage to the product.