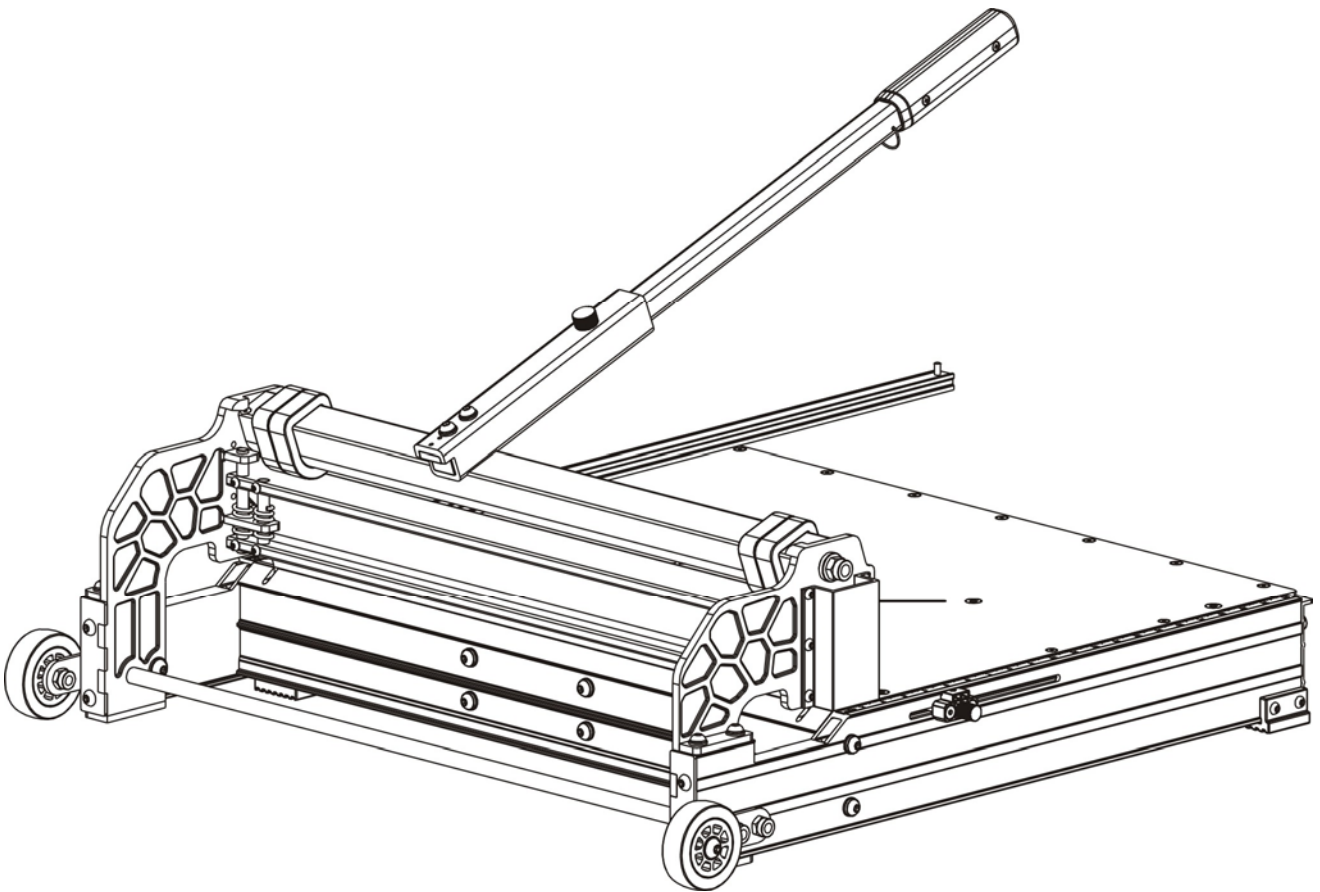


D-CUT®

OPERATION MANUAL

Carpet Tile / LVT Flooring Cutter LP-650

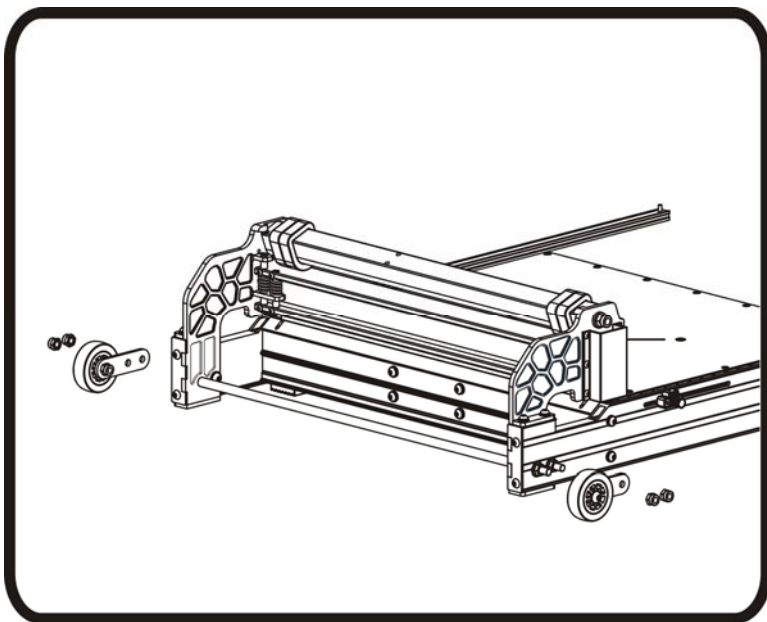




WARNING: FAILURE TO FOLLOW THESE RULES MAY RESULT IN SERIOUS INJURY! USING THIS MACHINE WITH RESPECT AND CAUTION WILL CONSIDERABLY LESSEN THE POSSIBILITY OF PERSONAL INJURY.

SAFETY RULES FOR THE FLOORING CUTTER

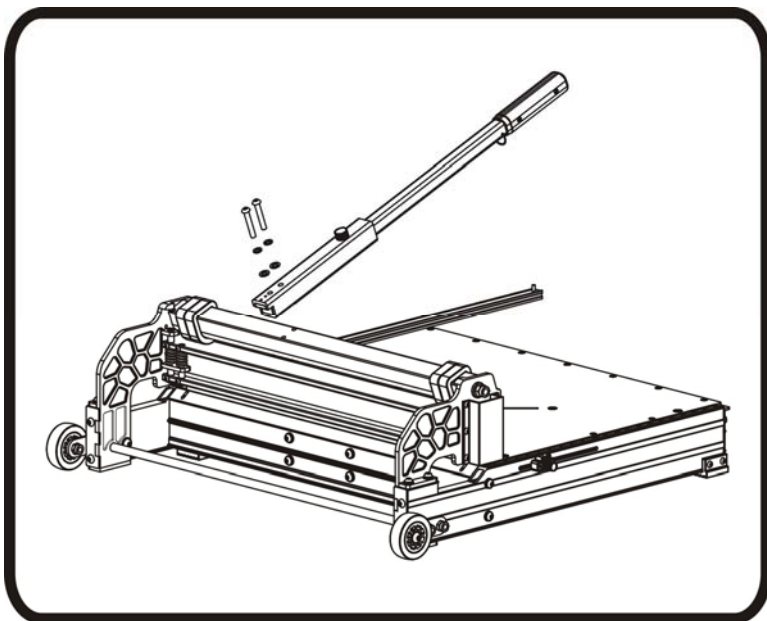
- 1. READ AND UNDERSTAND THIS INSTRUCTION MANUAL BEFORE OPERATING THE D-Cut MULTI-FLOORING CUTTERS.**
2. If you are not thoroughly familiar with the operation of D-Cut Multi-flooring Cutter, obtain advice from a qualified instructor or call 630-916-9100 USA
3. Stay alert. Do not operate while under the influence of drugs, alcohol, or medication.
4. Always wear safety approved eye protection with side shields(ANSI Z87.1)
5. Keep work area free of debris.
6. Keep children and unauthorized persons away from the D-Cut Multi-flooring Cutter and work area.
7. Make sure tool is secure. Operate only on a firm substrate or solid stand.
8. Use the right tool. Do not force the D-Cut Multi-flooring Cutter or use it for a job for which it was not designed; use only on approved materials.
9. Keep the blade sharp. A dull blade will not perform properly.
10. Always keep hands away from blade while operating or carrying the cutter.
11. Do not alter or misuse this tool. The D-Cut Multi-flooring Cutter is precision built; modifications not specified in this manual may result in a dangerous and unsafe environment.
12. Maintain the D-Cut Multi-flooring Cutter with care. Keep Blade sharp and clean. Follow instructions for changing accessories.
13. Use only recommended accessories. The use of improper accessories may be hazardous and cause injuries.
14. Never leave the D-Cut Multi-flooring Cutter unattended. Secure the handle with the lock chain when not in use.



Installation of the Cutter(1)

Install the wheel assembly to the cutter base with provided nuts as shown.

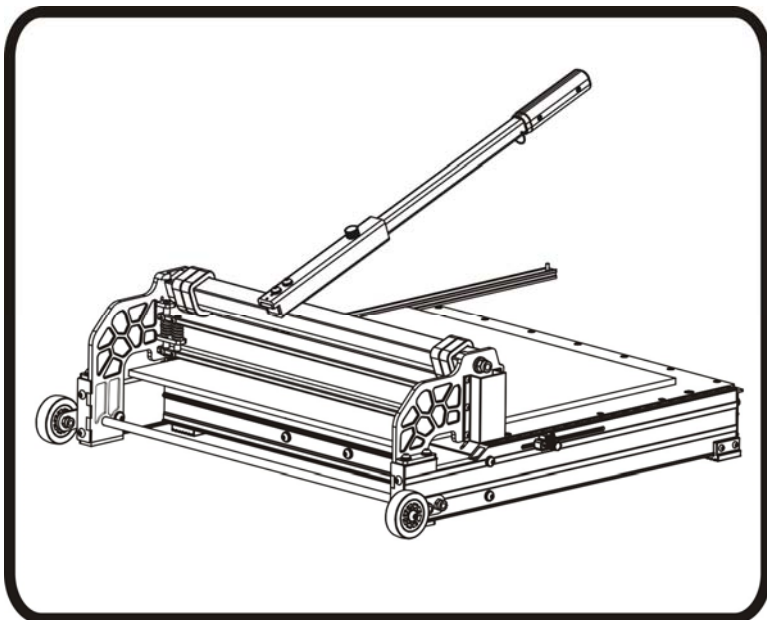
Warning: Do not put your fingers against the sharp edge of the blade at any time.



Installation of the Cutter (2)

Install the handle assembly to the cutter base with provided screws as shown.

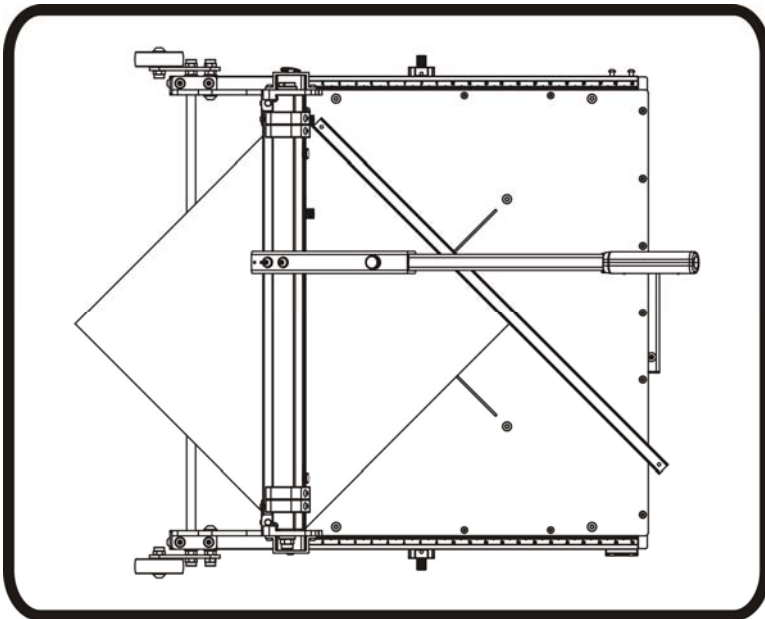
Warning: Do not put your fingers against the sharp edge of the blade at any time.



Straight Cut

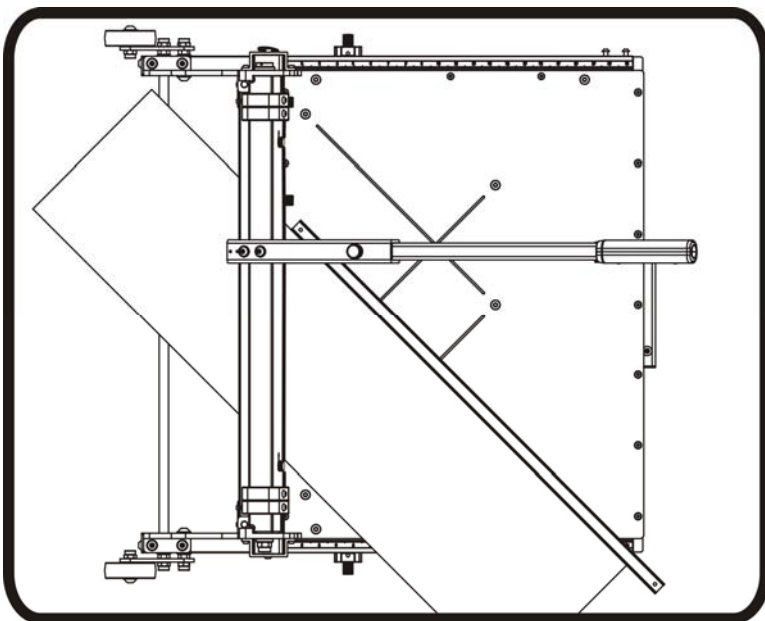
Insert the floor plank between the cutting blade and the base, flush with the guide bar on the working table and hold the plank then pull handle down to complete a cut.

Warning: Maintain control of the handle. Do not allow handle to slam back after making a cut.



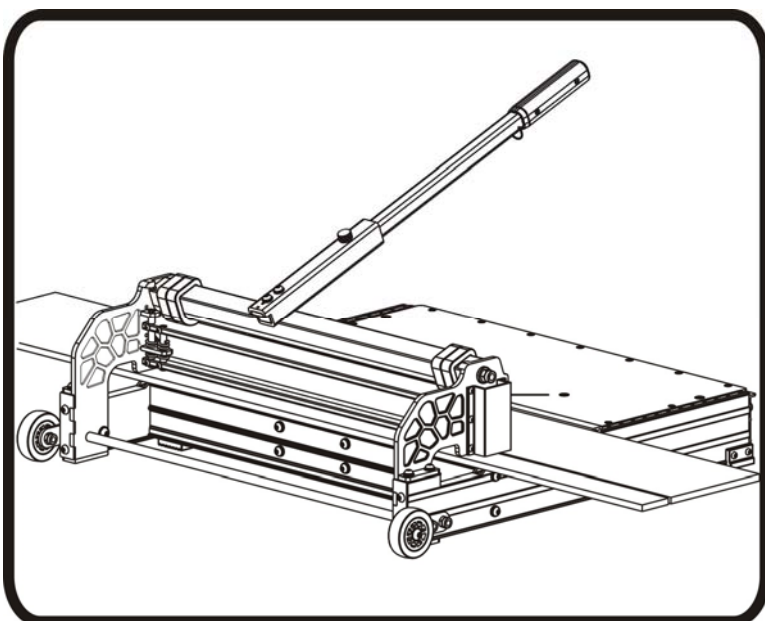
Diagonal Cut

Position the guide bar at 45°. Insert a carpet tile between the cutting blade and the base, along with the guide bar as shown, then pull the handle down to complete a cut.



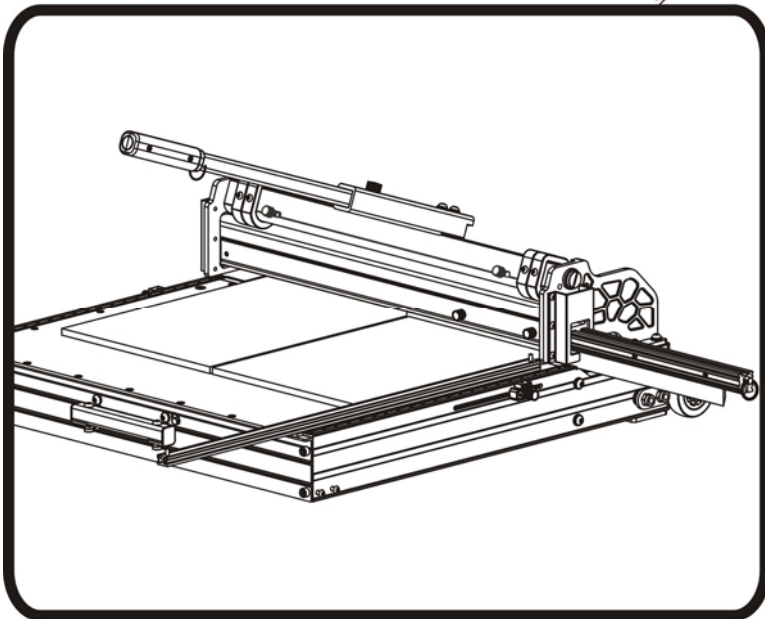
45° Cut

Position the guide bar at 45°. Insert the floor plank between the cutting blade and the base, along with the guide bar as shown, then pull the handle down to complete a cut.



Lengthwise Cut

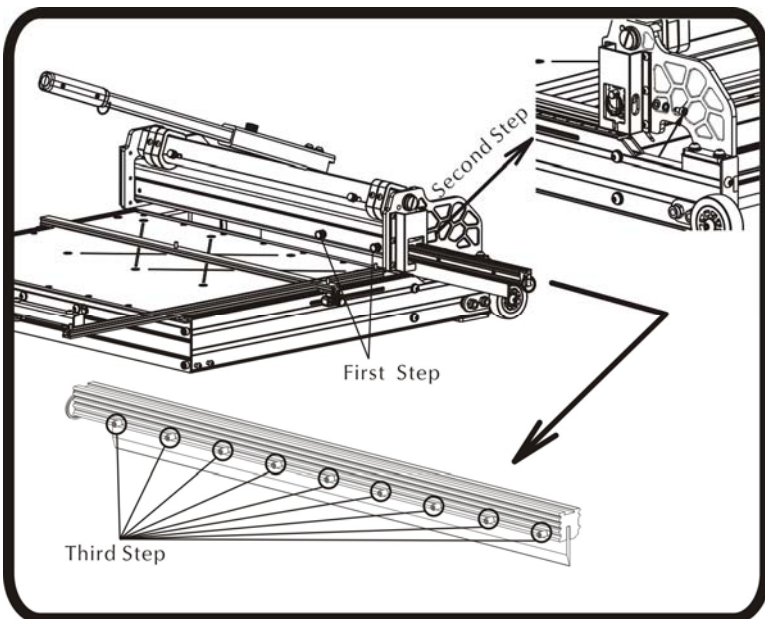
Insert the floor plank between the cutting blade and the working table along with the guide bar which can be locked on both sides of the working table. Keep moving the plank along with the guide bar after each cut until the complete plank is cut.



Notch Cut

Make a lengthwise cut first to the desired length on the floor plank as mentioned above, then turn the plank 90°, and put desired cutting point under the blade.

Unlock two screws on the blade holder and pull out the blade as shown to above mentioned desired cutting point, then pull the handle down to complete a cut.

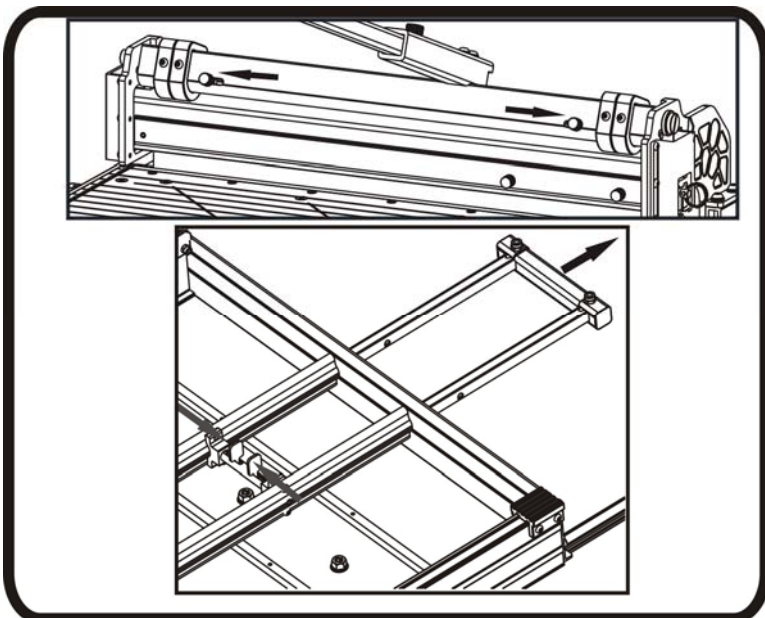


Changing the Blade

First loosen the two screws on the blade holder and remove the stopper screw holder and pull out the blade as shown. Use provided Allan wrench to remove the nine screws, then carefully move the blade out of the small blade holder.

Note: the flat side of the blade should face the working table.

Warning: Do not put your fingers against the sharp edge of the blade at any time.

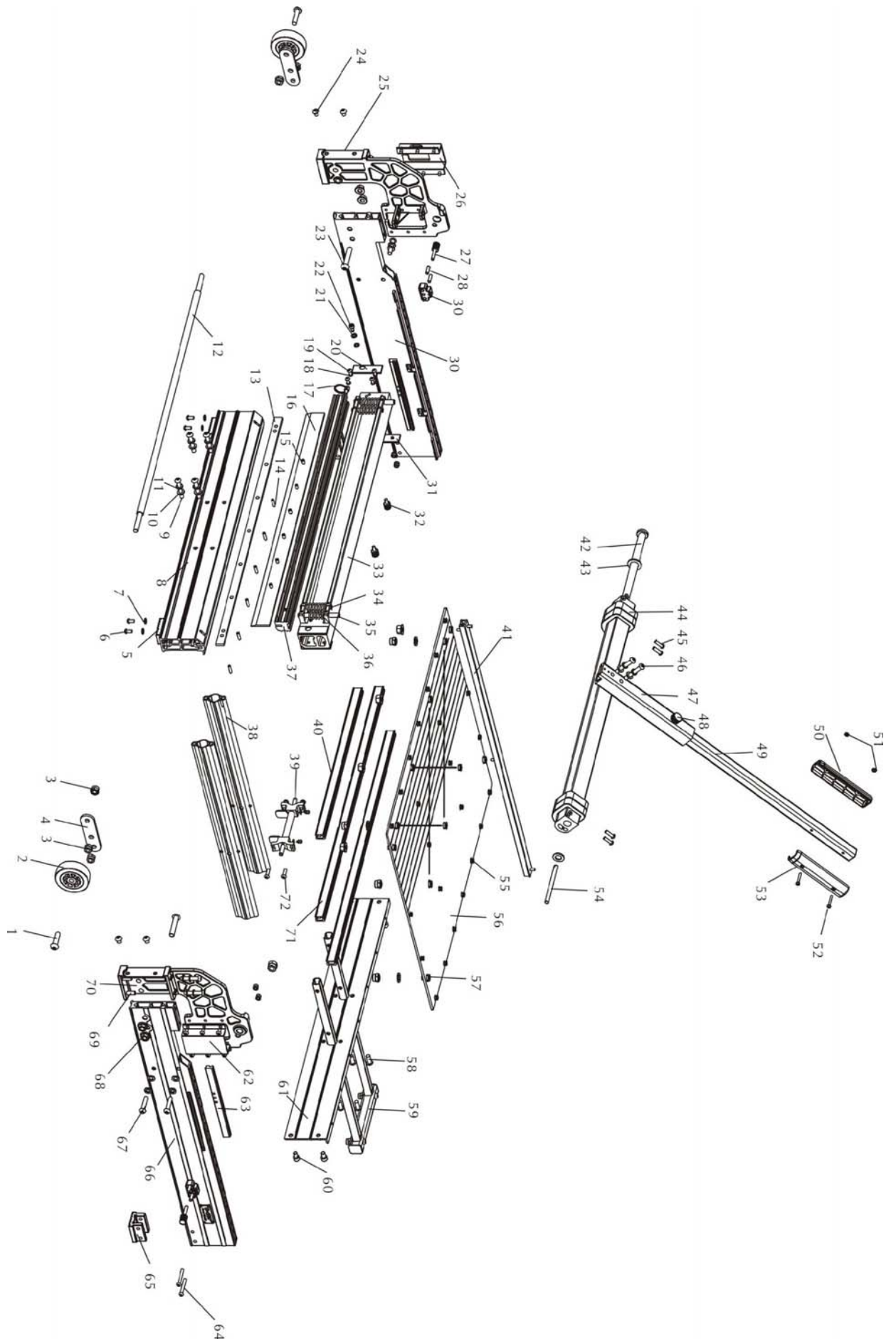


Transportation

Slide the lock pins to lock the cutting head when the cutter is not use to keep the blade in a close position for the safety as shown on top illustration.

Pull out the carry handle while the lock pins are released as shown on bottom illustration.

Explosive View





Explosive View

	Parts	Q'ty		Parts	Q'ty
1	Screw M10 × 40	2	37	Blade Holder	1
2	Wheel	2	38	Carry Handle Base	2
3	Lock Nut M10	6	39	Spring Pin Assembly	1
4	Wheel Base	2	40	Short Supporting Bar	1
5	Rubber Foot B	2	41	Guide Bar	1
6	Screw M6 × 12	4	42	Rotating Shaft	1
7	Washer φ6	5	43	Washer φ16	2
8	Front Cutter Base	1	44	Nylon Cam Ring	4
9	Screw M8 × 50	6	45	Screw M6 × 20	4
10	Spring Washer φ8	16	46	Screw M8 × 55	2
11	Washer φ8	14	47	Handle A	1
12	Wheel Shaft	1	48	Knurling Screw M8	1
13	Nylon Bar	1	49	Handle B	1
14	Screw M5 × 20	7	50	Right ABS Handle	1
15	Screw M6 × 10	9	51	Nut M4	2
16	Blade	1	52	Screw M4 × 30	2
17	Pull Ring	1	53	Left ABS Handle	1
18	Spring Washer φ5	8	54	Latch	2
19	Screw M5 × 14	8	55	Screw M5 × 8	20
20	Sliding Nylon Piece A	2	56	Working Table	1
21	Spring Washer φ6	1	57	Guide Bar Socket	10
22	Customized Screw M6 × 10	1	58	Screw M8 × 20	4
23	Screw M10 × 55	2	59	Carry Handle Assembly	1
24	Screw M8 × 10	8	60	Screw M8 × 12	4
25	Right Bracket	1	61	Rear Cutter Base	1
26	Left Side Cover	1	62	Right Side Cover	1
27	Knurling Screw M6 × 12	2	63	Sliding Base	2
28	Pin	4	64	Screw M6 × 45	4
29	Sliding Socket	2	65	Rubber Feet A	2
30	Right Cutter Base	1	66	Left Cutter Base	1
31	Sliding Nylon Piece A	2	67	Screw M8 × 40	4
32	Knurling Screw M6 × 45	2	68	Flange Nut M10	12
33	Blade Holder Base	1	69	Screw M8 × 25	4
34	Short Guide Pillar	2	70	Left Bracket	1
35	Long Guide Pillar	2	71	Long Supporting Bar	2
36	Spring	4	72	Screw M6 × 20	4