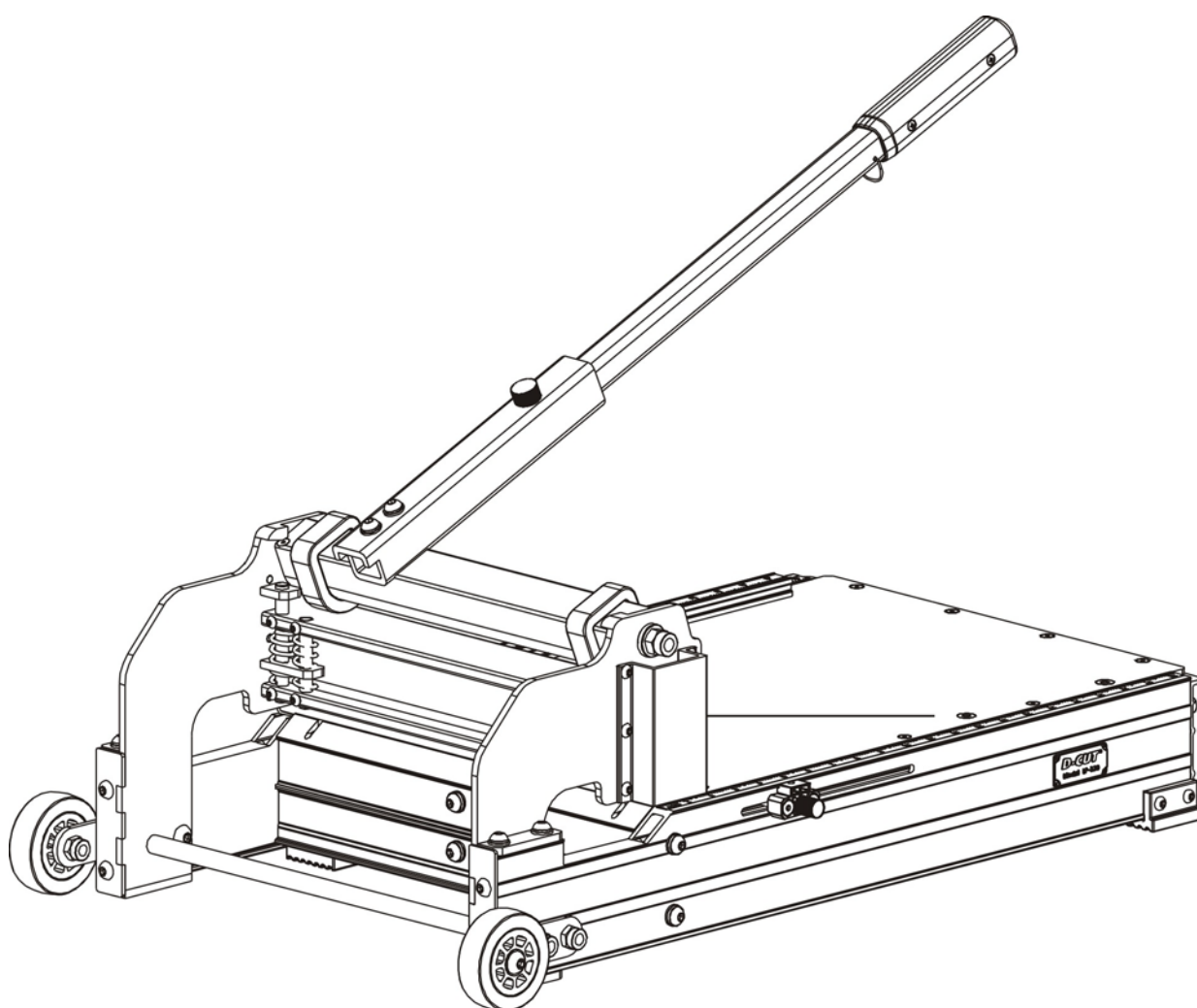


D-CUT®

OPERATION MANUAL

D-CUT WPC/LVP/VCT Cutter LP-330

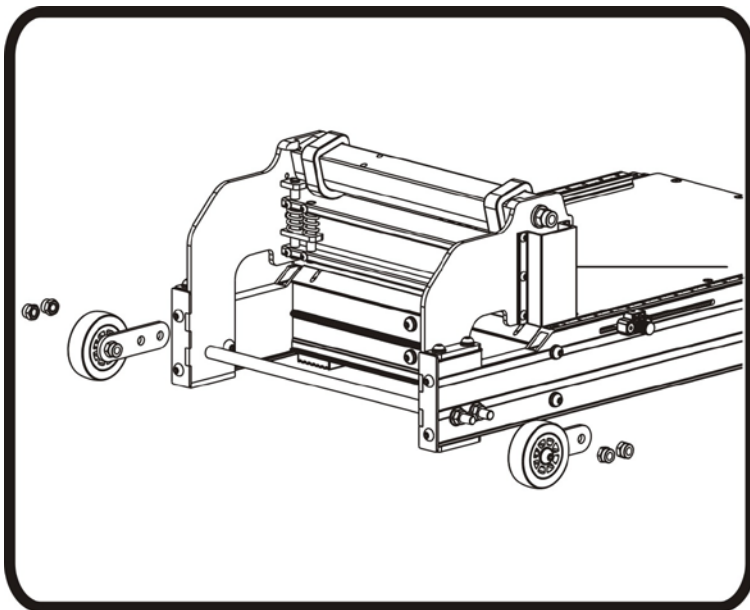




WARNING: FAILURE TO FOLLOW THESE RULES MAY RESULT IN SERIOUS INJURY! USING THIS MACHINE WITH RESPECT AND CAUTION WILL CONSIDERABLY LESSEN THE POSSIBILITY OF PERSONAL INJURY.

SAFETY RULES FOR THE FLOORING CUTTER

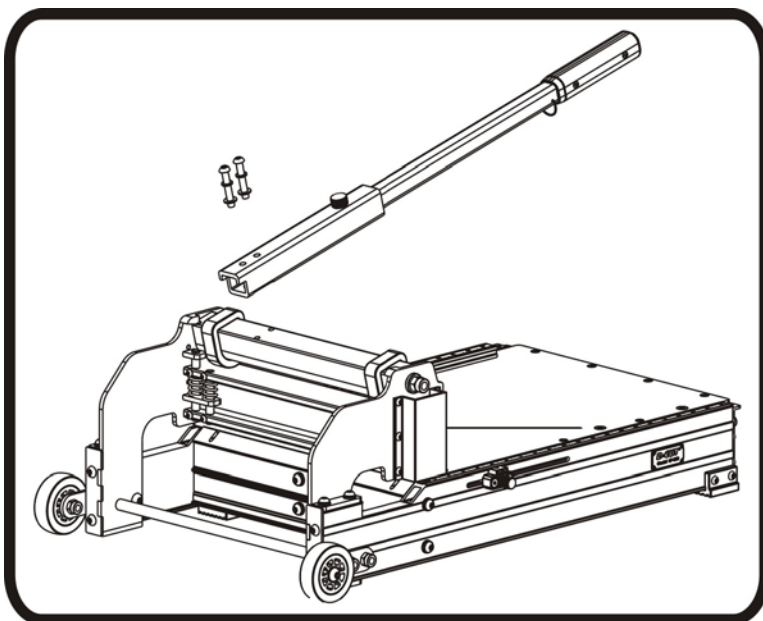
- 1. READ AND UNDERSTAND THIS INSTRUCTION MANUAL BEFORE OPERATING THE D-Cut MULTI-FLOORING CUTTERS.**
2. If you are not thoroughly familiar with the operation of D-Cut Multi-flooring Cutter, obtain advice from a qualified instructor or call 630-916-9100 USA
3. Stay alert. Do not operate while under the influence of drugs, alcohol, or medication.
4. Always wear safety approved eye protection with side shields(ANSI Z87.1)
5. Keep work area free of debris.
6. Keep children and unauthorized persons away from the D-Cut Multi-flooring Cutter and work area.
7. Make sure tool is secure. Operate only on a firm substrate or solid stand.
8. Use the right tool. Do not force the D-Cut Multi-flooring Cutter or use it for a job for which it was not designed; use only on approved materials.
9. Keep the blade sharp. A dull blade will not perform properly.
10. Always keep hands away from blade while operating or carrying the cutter.
11. Do not alter or misuse this tool. The D-Cut Multi-flooring Cutter is precision built; modifications not specified in this manual may result in a dangerous and unsafe environment.
12. Maintain the D-Cut Multi-flooring Cutter with care. Keep Blade sharp and clean. Follow instructions for changing accessories.
13. Use only recommended accessories. The use of improper accessories may be hazardous and cause injuries.
14. Never leave the D-Cut Multi-flooring Cutter unattended. Secure the handle with the lock chain when not in use.



Installation of the Cutter(1)

Install the wheel assembly to the cutter base with provided nuts as shown.

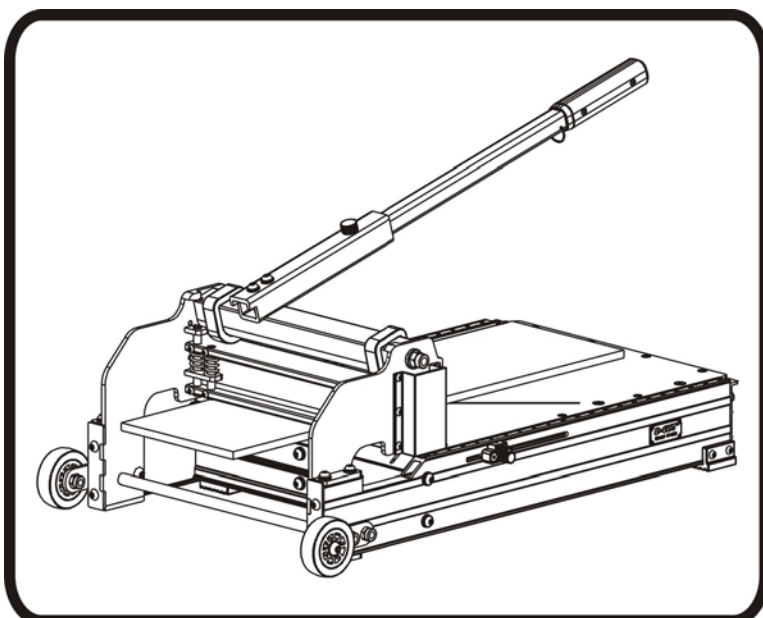
Warning: Do not put your fingers against the sharp edge of the blade at any time.



Installation of the Cutter (2)

Install the handle assembly to the cutter base with provided screws as shown.

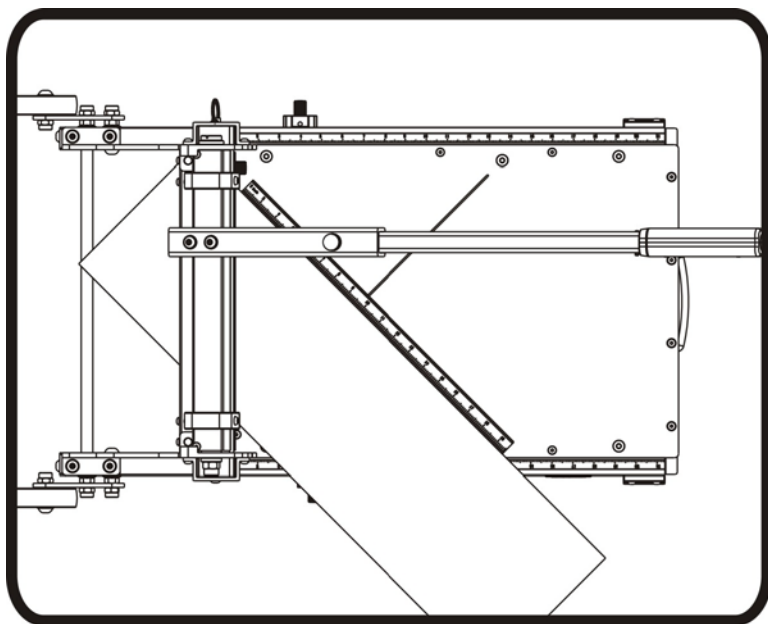
Warning: Do not put your fingers against the sharp edge of the blade at any time.



Straight Cut

Insert the floor plank between the cutting blade and the base, flush with the guide bar on the working table and hold the plank then pull handle down to complete a cut.

Warning: Maintain control of the handle. Do not allow handle to slam back after making a cut.

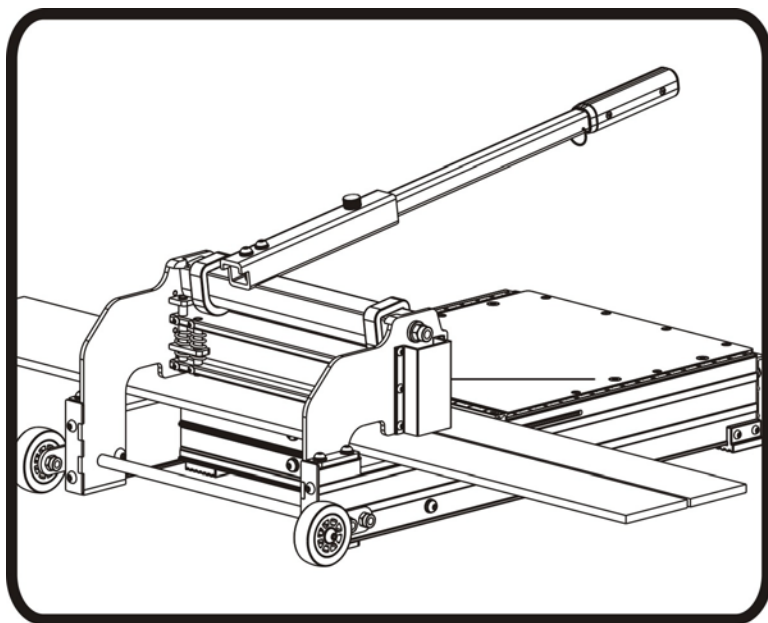


45° Cut

Position the guide bar at 45°. Insert the floor plank between the cutting blade and the base, along with the guide bar as shown, then pull the handle down to complete a cut.

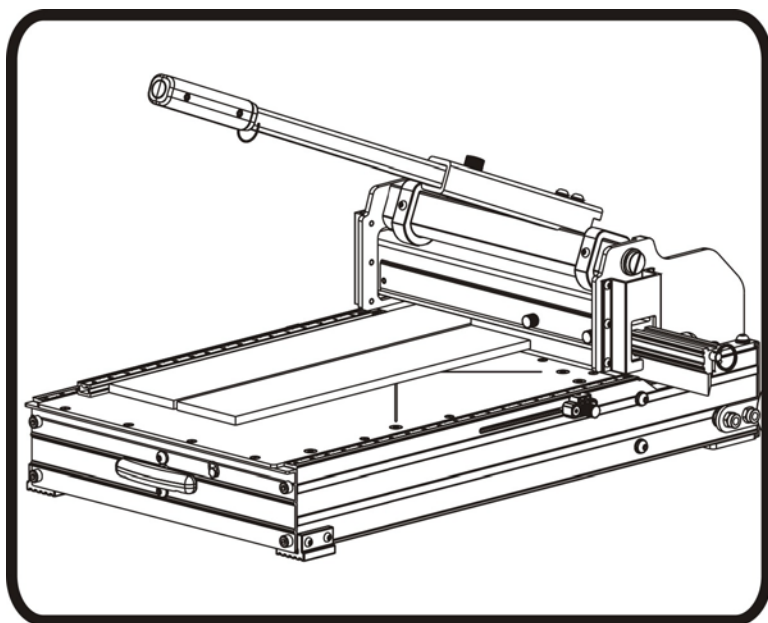
Note:

Some of 45° cuts may need two cuts. Make a straight cut before the angle cut.



Lengthwise Cut

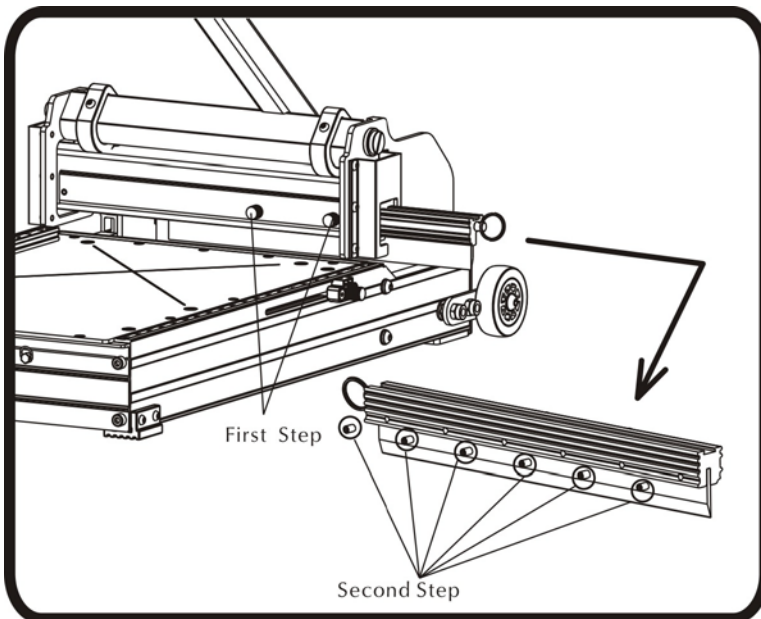
Insert the floor plank between the cutting blade and the working table along with the guide bar which may locked on both sides of the working table. Keep moving the plank along with the guide bar after each cut until the complete plank is cut.



Notch Cut

Make a lengthwise cut first to desired length on the floor plank as mentioned above, then turn the plank 90°, and put desired cutting point under the blade.

Unlock two screws on the blade holder and pull out the blade as shown to above mentioned desired cutting point, then pull the handle down to complete a cut.

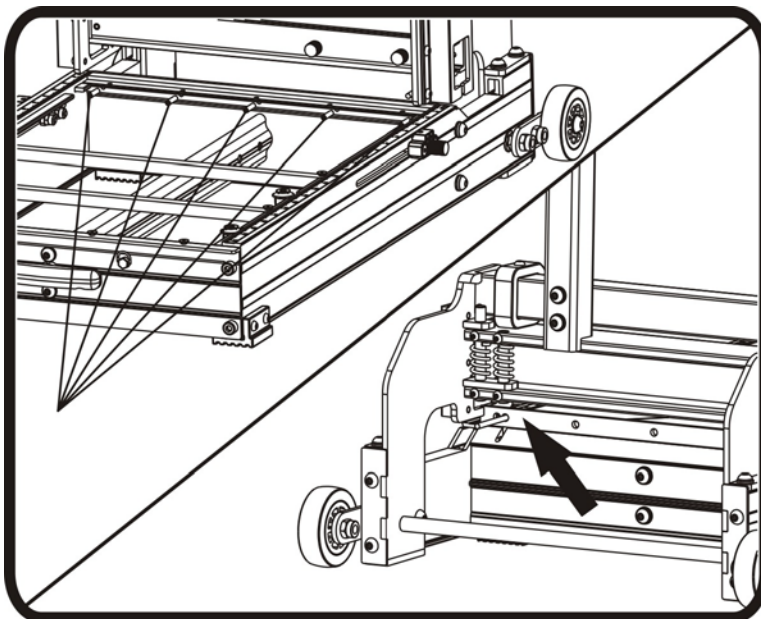


Changing the Blade

First loosen the two screws on the blade holder and pull out the blade as shown. Use provided Allan wrench to remove the six screws, then carefully move the blade out of the small blade holder.

Note: the flat side of the blade should face the working table.

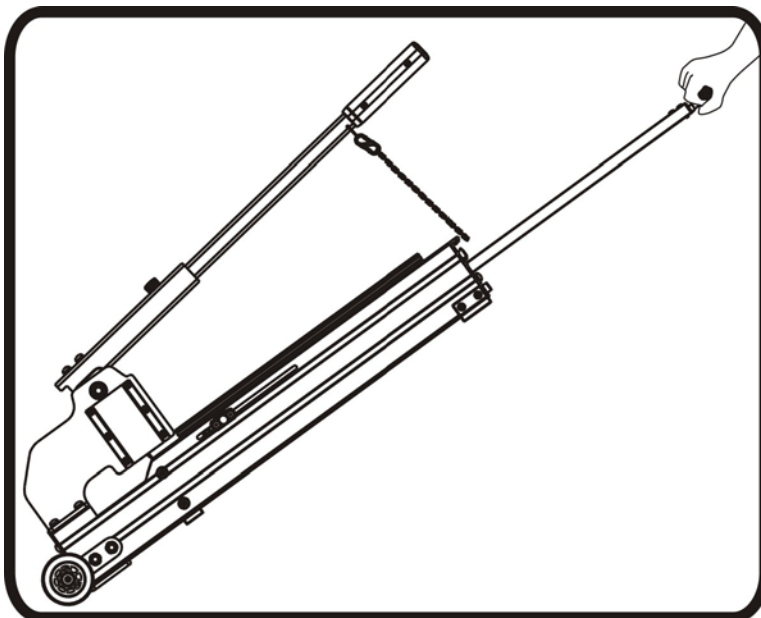
Warning: Do not put your fingers against the sharp edge of the blade at any time.



Changing the Nylon Bar

Use the provided Allan wrench to remove the five screws, then use a stick out the nylon bar and carefully move it out of nylon bar holder.

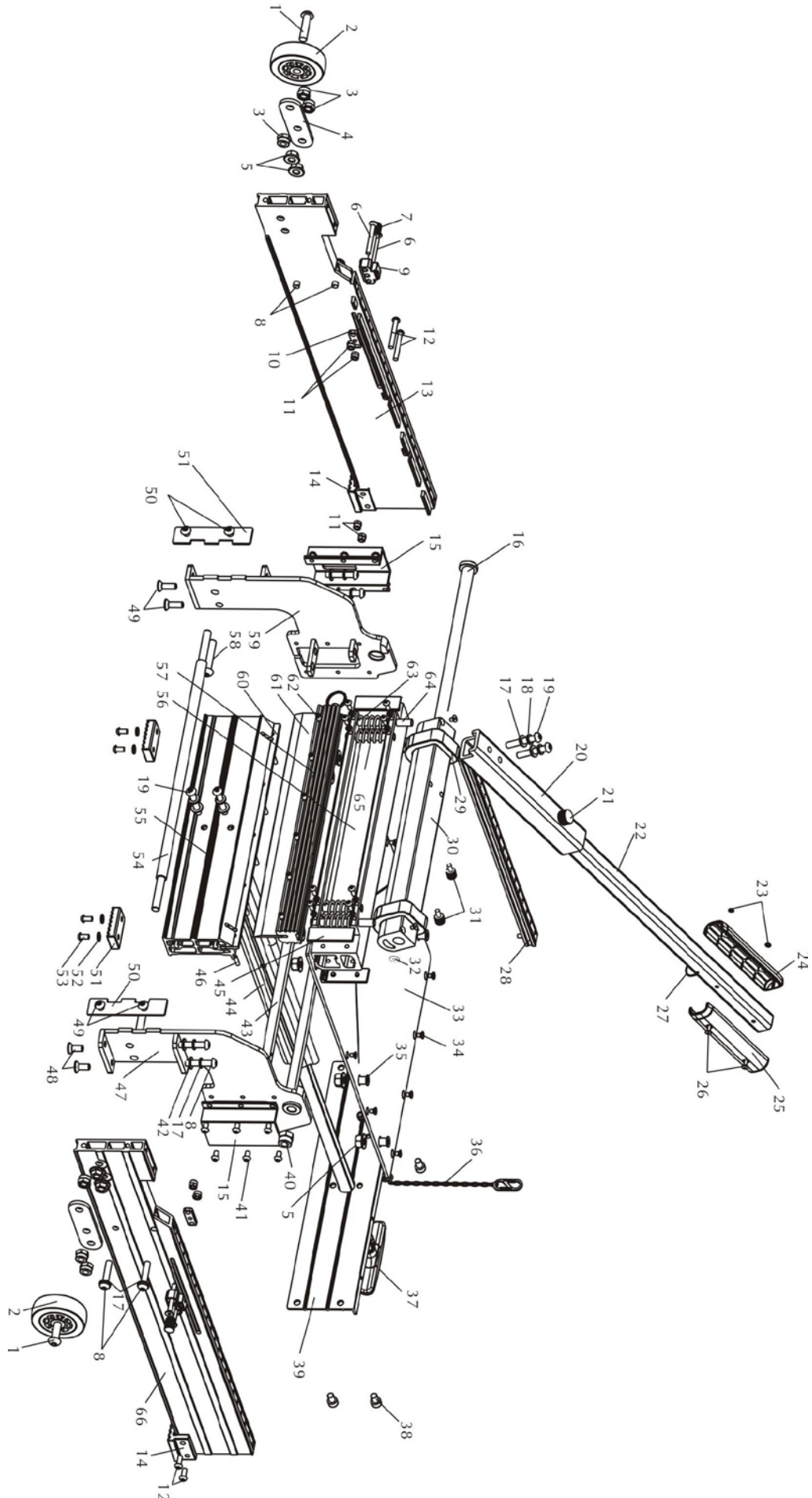
Warning: Do not put your fingers against the sharp edge of the blade at any time.



Transport

Hook the chain to the ring on the handle and pull out the carry handle. Then carry the cutter as shown.

Explosive View





Explosive View

	Parts	Q'ty		Parts	Q'ty
1	Screw M10 × 40	2	34	Screw M5 × 8	13
2	Wheel	2	35	Guide Bar Socket	8
3	Lock Nut M10	6	36	Chain Assembly	1
4	Wheel Base	2	37	Carry Handle Assembly	1
5	Flange Nut M10	12	38	Screw M8 × 12	4
6	Bolt M6 × 50	4	39	Rear Cutter Base	1
7	Knurling Screw M6 A	2	40	Nut M12	1
8	Screw M8 × 40	8	41	Screw M6 × 10	12
9	Sliding Socket	2	42	Spring Washer ϕ 8	4
10	Sliding Base	2	43	Supporting Bar	2
11	Nut M6	8	44	Carry Handle Base	1
12	Screw M6	4	45	Sliding Nylon Piece	4
13	Right Cutter Base	1	46	Screw M5 × 20	5
14	Rubber Footer A	2	47	Left Bracket	1
15	Side Cover	2	48	Screw M8 × 20	4
16	Rotating Shaft	1	49	Screw M8 × 10	4
17	Washer ϕ 8	4	50	End Cover	2
18	Spring Washer ϕ 8	4	51	Rubber Foot B	2
19	Screw M8 × 50	4	52	Washer ϕ 6	4
20	Handle A	1	53	Screw M6 × 12	4
21	Knurling Screw M8	1	54	Wheel Shaft	1
22	Handle B	1	55	Front Cutter Base	1
23	Nut M4	2	56	Blade Holder Base	1
24	Right ABS Handle	1	57	Blade Holder	1
25	Left ABS Handle	1	58	Screw M10 × 12	2
26	Screw M4 × 30	2	59	Right Bracket	1
27	Hook A	1	60	Nylon Bar	1
28	Guide Bar	1	61	Blade	1
29	Nylon Cam Wheel	2	62	Screw M6 × 10	6
30	Aluminum Cam Wheel	1	63	Spring	3
31	Knurling Screw M6 B	2	64	Long Guide Pillar	2
32	Washer ϕ 12	1	65	Short Guide Pillar	2
33	Working Table	1	66	Left Cutter Base	1