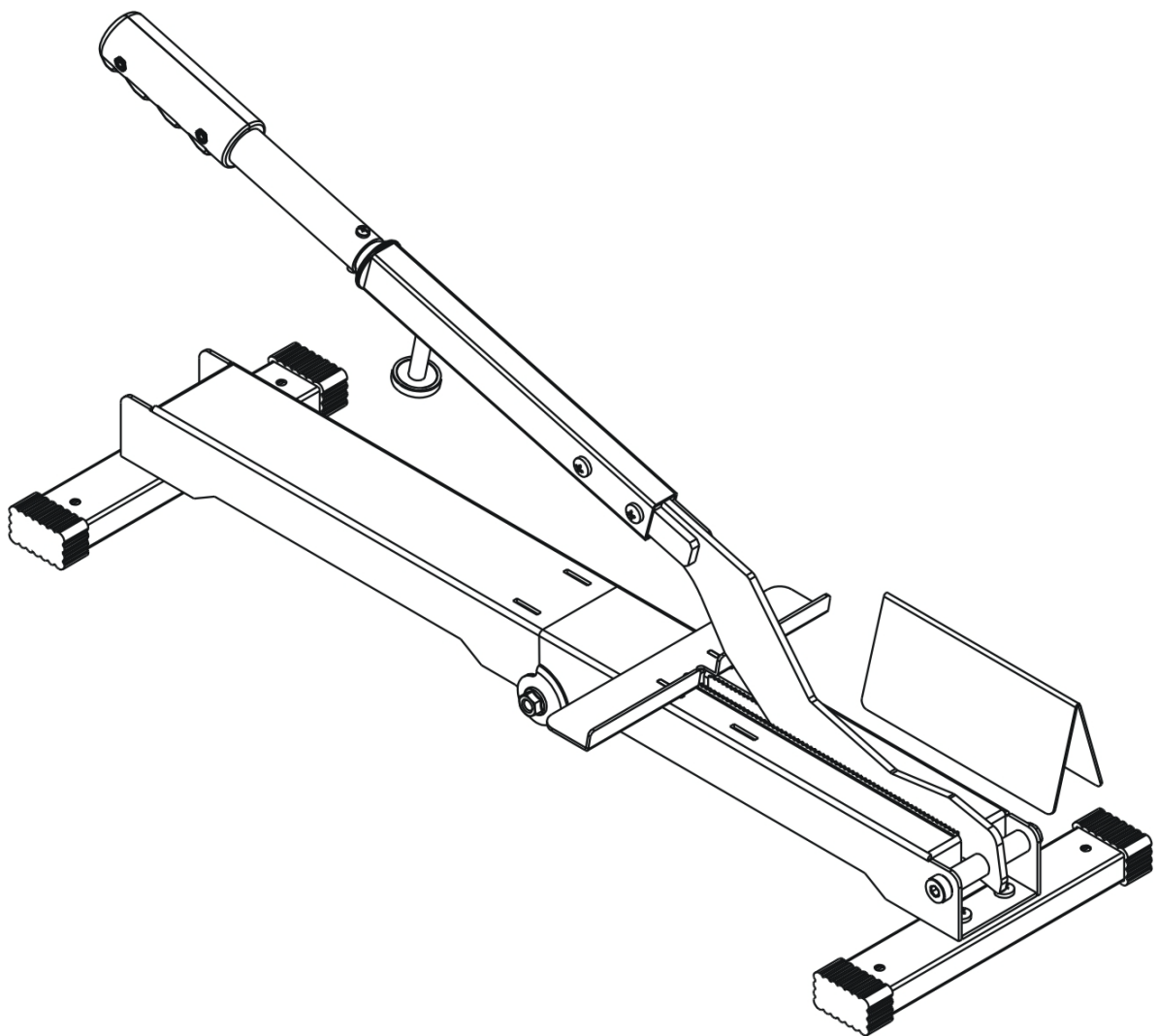


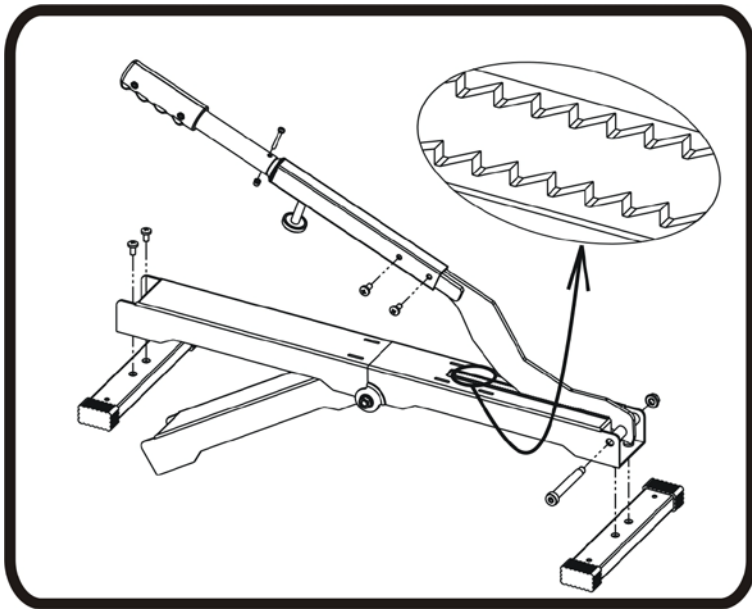
# *D-CUT*®

## OPERATION MANUAL

---

D-Cut Laminate Cutter LD-215





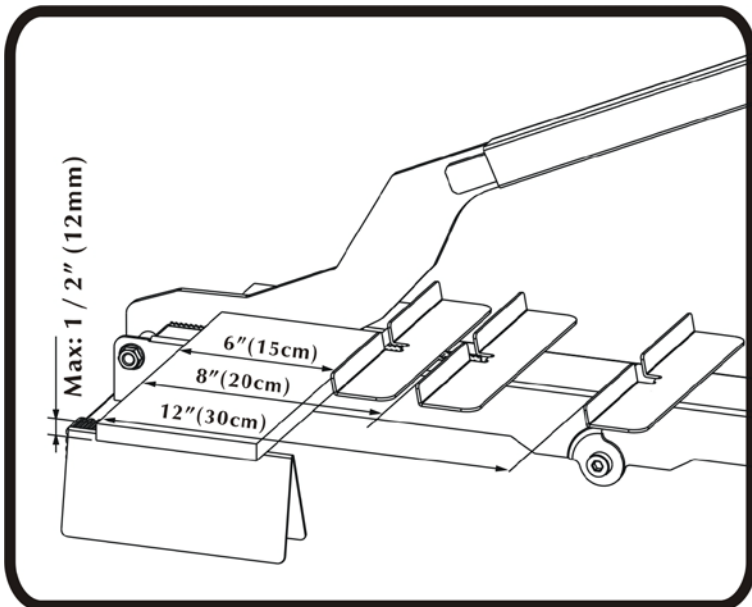
### Assembly

Open the base and use the provided Allan wrench, screws, bolt and nuts to assemble:

1. Two cross bars
2. The blade onto the base
3. The handle

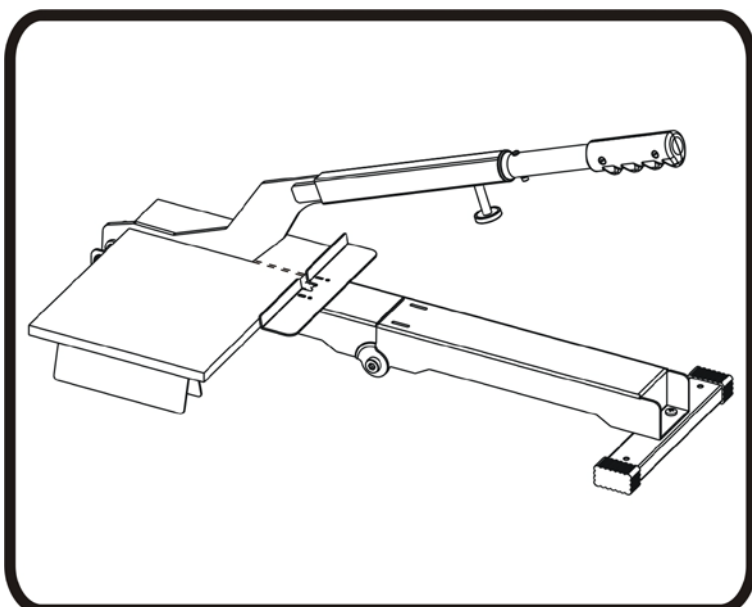
### Warning:

Avoid contacting with the steel teeth along the cutting slot, which may cause injury.



### The Slot on the Cutter Base

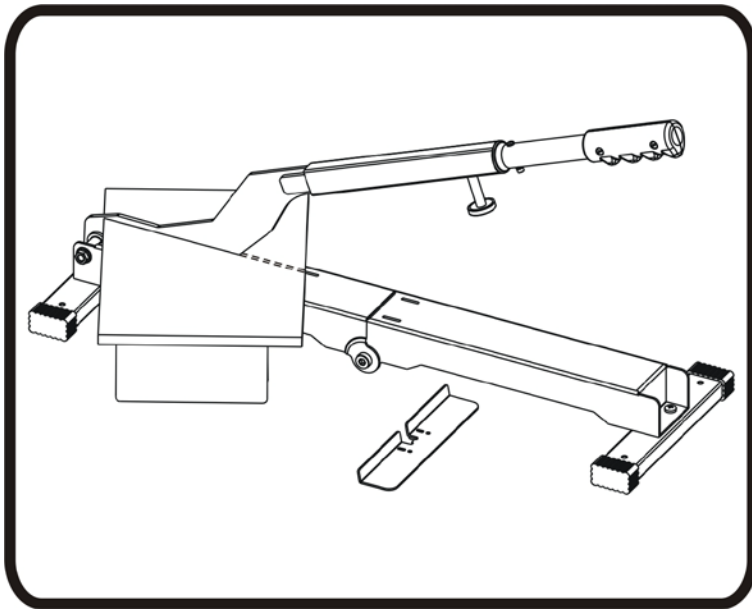
On the cutter base, there are a few sets of the slot used for the stopper attachment. Always use the slots closer to the pivot of the blade according to the width of the plank. The closer to the pivot of the blade, the more cutting power you will get.



### Straight Cut

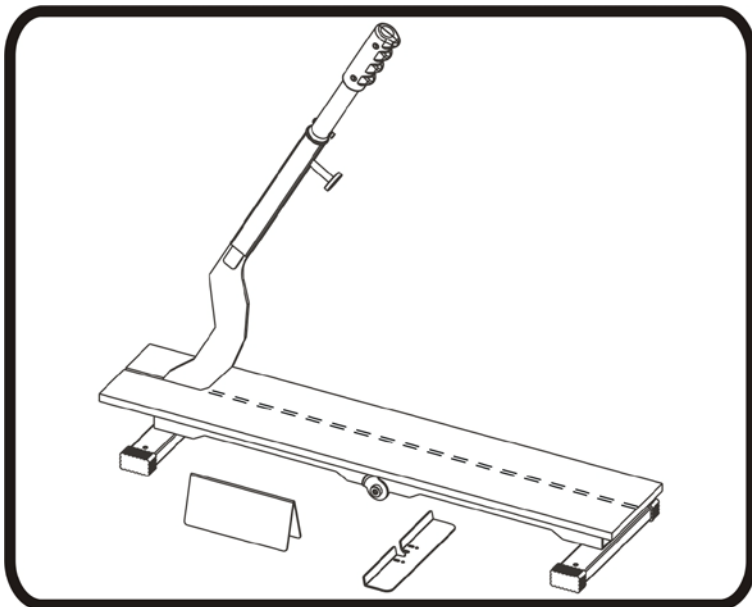
Place the flooring plank onto the cutter base and position the stopper in the appropriate slot at the required length. Then push down the blade by using the handle. The cutter is designed to cut through laminate pieces by removing a small amount of laminate.

**Please note that a slightly rough edge is normal.** The cut edge will meet the wall and be covered by a molding (a base board or a quarter-round).



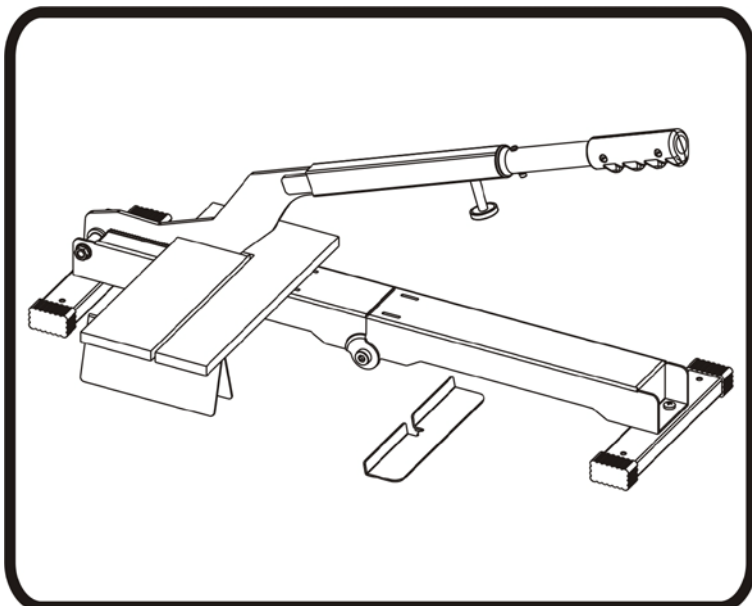
### Free Angle Cut

Mark a line of the floor plank and remove the stopper attachment from the cutter base. Line up the blade with the line marked on the plank, then push down the blade by using the handle. The small teeth located along the cutting slot will keep the laminate plank from slipping. If the cut is longer than 20cm (8 inch) it is recommended to make a few cuts with the increment of 5cm (2 inch) for each cut in order to follow the marked cutting line. After making each cut pull the handle back up. Slide the cut portion of the flooring towards the pivot of the blade and cut again. Repeat the procedure until the full length of the cut is completed.



### Lengthwise Cut

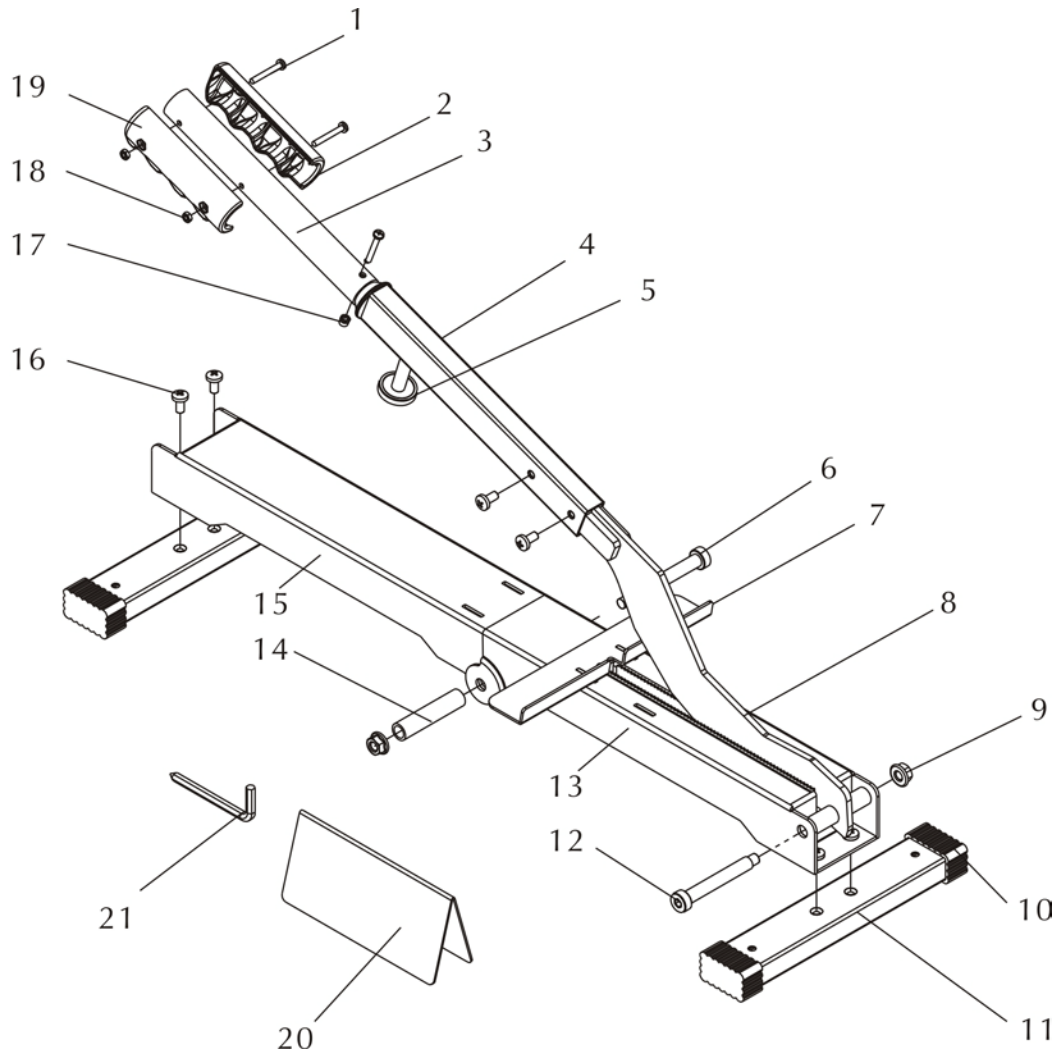
When cutting laminate lengthwise, remove the stopper from the cutter base. Mark a line on the laminate plank and place it on the base. Hold it down firmly while pushing down the cutter blade. Small teeth located along the cutting slot will keep the laminate plank from slipping. If the cut is longer than 20cm (8 inch), it is recommended to make a few cuts with the increment of 5cm (2 inch) for each cut in order to follow the marked cutting line. After making each cut pull the handle back up. Slide the cut portion of laminate towards the pivot of the blade and cut again. Repeat the procedure until the full length of the cut is completed.



### "L" Cut

When making an "L" cut, it is recommended to cut the lengthwise first, following the "Lengthwise Cut" procedure to cut plank to the required point and then re-position the plank, make a last cut "cut-out".

# Parts List



	Parts	Q'ty		Parts	Q'ty
1	Cross Head Screw M4 × 31	3	12	Customized Bolt-2	1
2	Left ABS Handle	1	13	Font Base	1
3	Handle Tube	1	14	Sleeve	1
4	Square Tube Handle	1	15	Rear Base	1
5	Circular Rubber Pad	1	16	Cross Head Screw M6 × 12	6
6	Customized Bolt-1	1	17	Nylon Locknut M4	1
7	Stopper Attachment	1	18	Nut M4	2
8	Blade	1	19	Right ABS Handle	1
9	Flange Locknut M8	2	20	Supporting Stand	1
10	Rubber End Cap	4	21	Allan Wrench M8	1
11	Cross Bar	2			