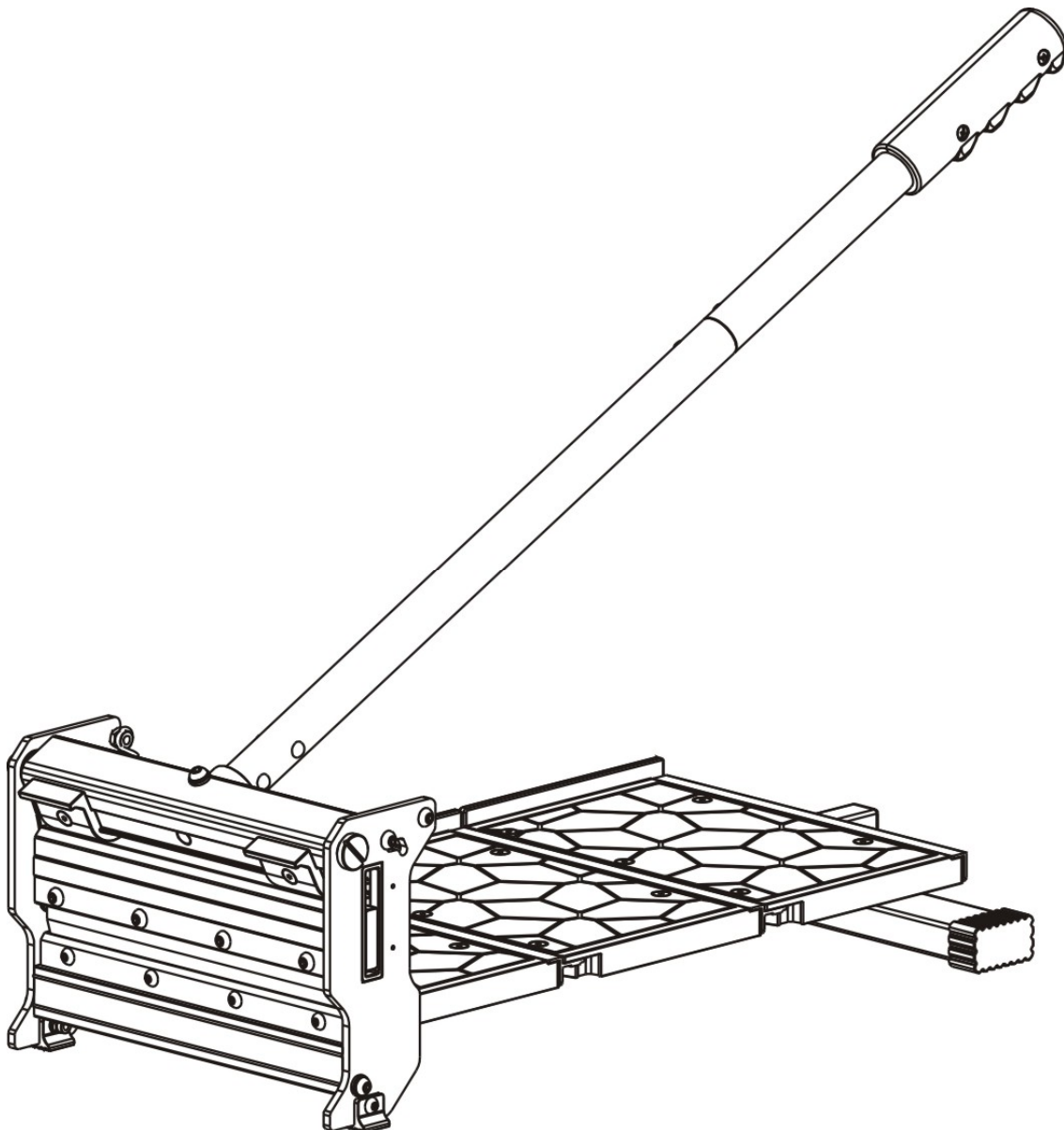


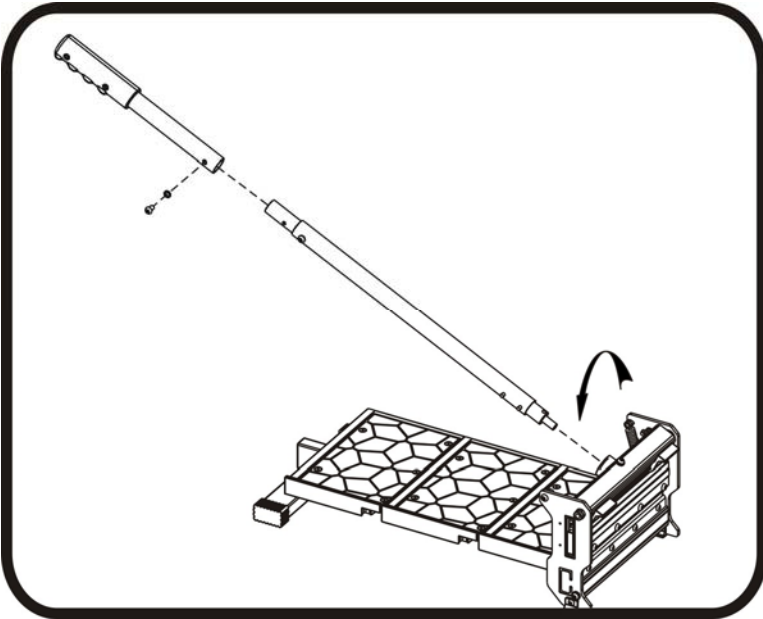
D-CUT[®]

OPERATION MANUAL

Manual Trim Cutter GC-230

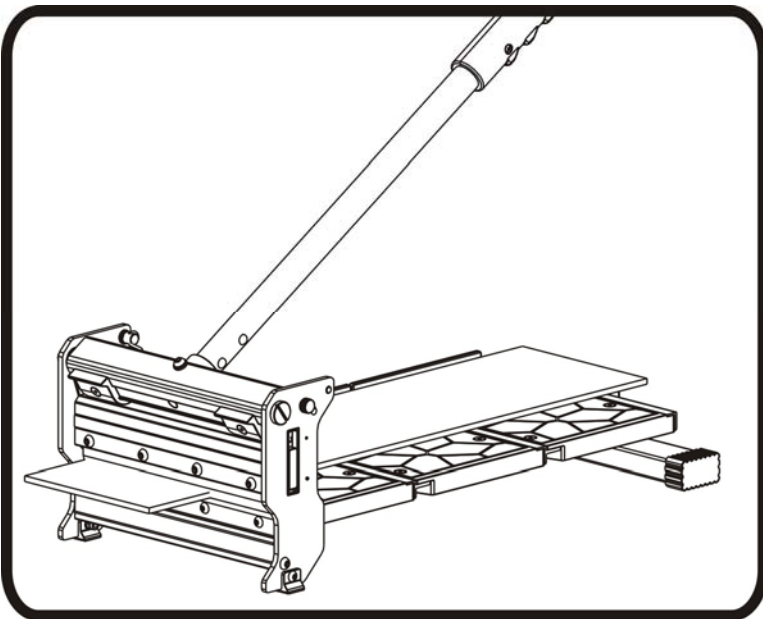


www.dcutproducts.com



Handle Assembly

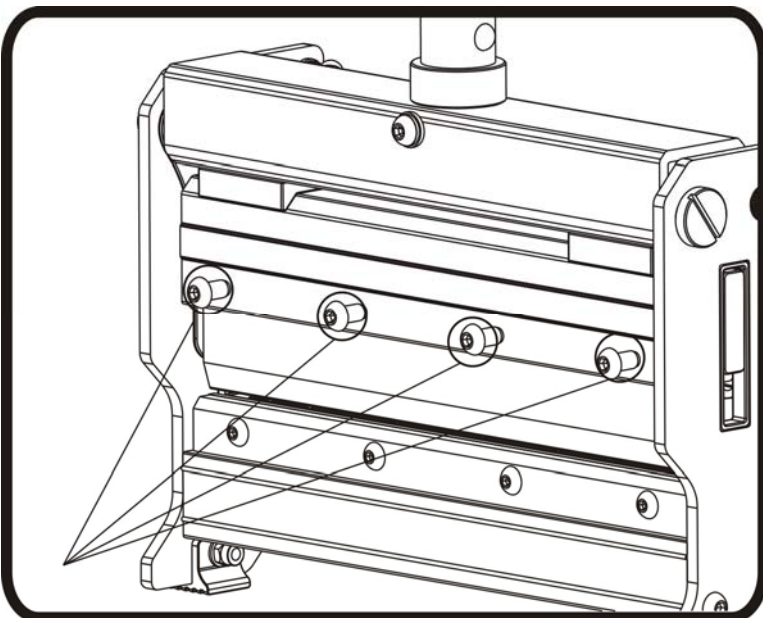
Insert the handle to the handle base and use the provided screw / washer / spring washer as shown.



Straight Cut

Insert the floor plank between the cutting blade and the base, flush with the guide bar on the working table and hold the plank then pull handle down to complete a cut.

Warning: Maintain control of the handle. Do not allow handle to slam back after making a cut.

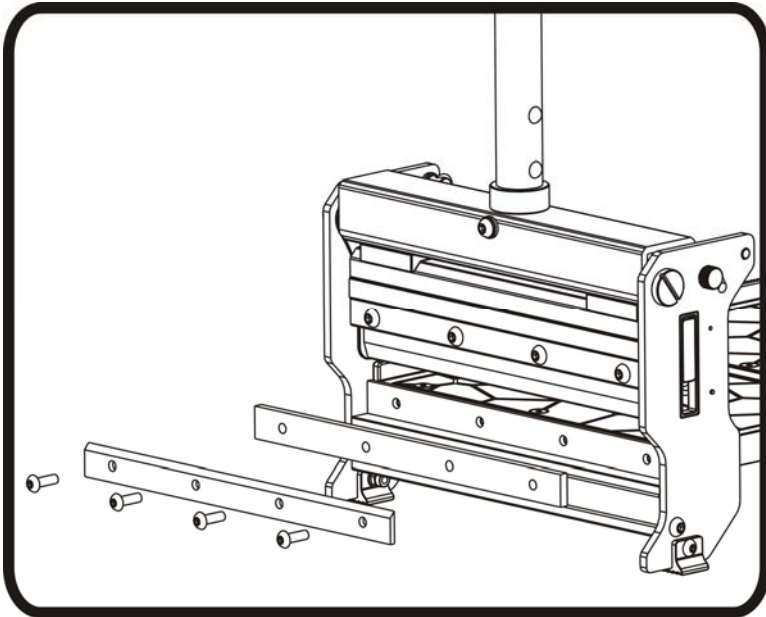


Changing the Blade

Use provided Allan wrench to remove the four screws, and then move the blade out of the blade holder.

Note: the flat side of the blade should face the working table.

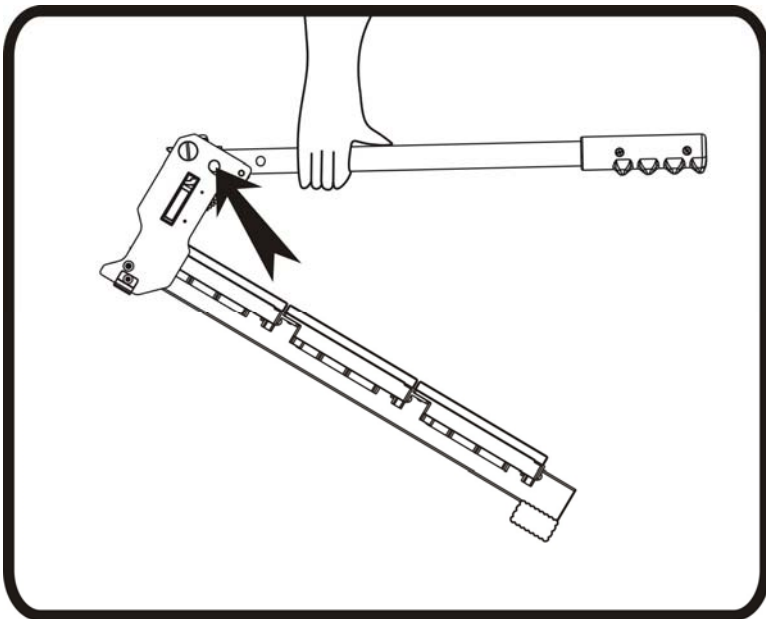
Warning: Do not put your fingers against the sharp edge of the blade at any time.



Changing the Nylon Bar

Use the provided Allan wrench to remove the four screws, and then remove the old nylon bar.

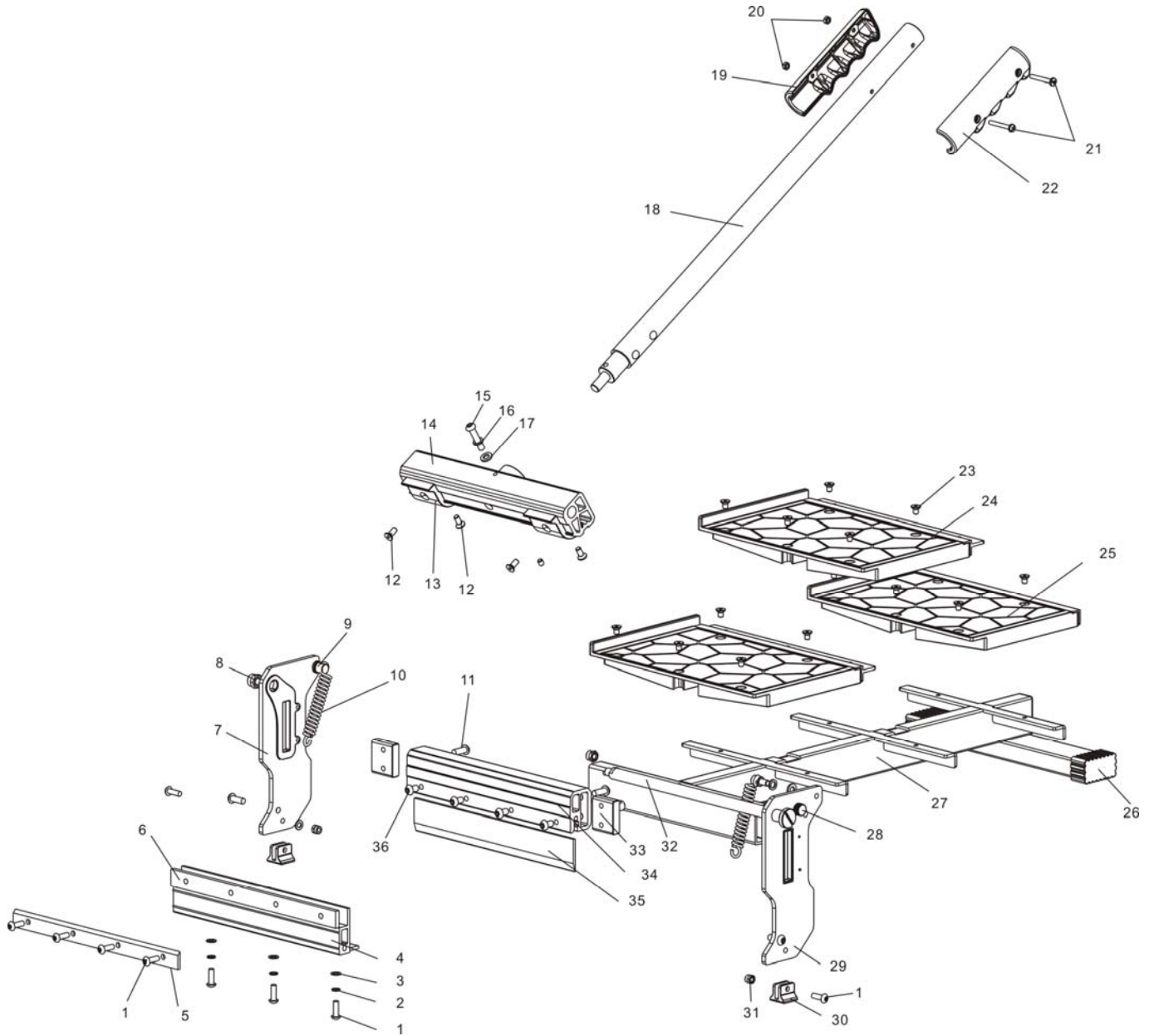
Warning: Do not put your fingers against the sharp edge of the blade at any time.



Transport

Push down the handle and then move the lock-pin to lock the blade hold in a close position as shown for the safety.

Explosive View





Explosive View

	Parts	Q'ty		Parts	Q'ty
1	Screw M5 × 16	9	19	Right ABS Handle	1
2	Spring Washer φ 5	3	20	Nut M4	2
3	Washer	3	21	Screw M4 × 31	2
4	Nylon Bar Holder Base	1	22	Left ABS Handle	1
5	Nylon Bar Holder	1	23	Screw M5 × 8	15
6	Nylon Bar	1	24	Working Table A	2
7	Right Bracket	1	25	Working Table B	1
8	Nut M8	2	26	End Cover	2
9	Spring Base	4	27	Cutter Base	1
10	Spring	2	28	Knurling Screw M5	1
11	Screw M6 × 16	2	29	Left Bracket	1
12	Screw M5 × 12	2	30	Rubber Feet	2
13	Nylon Cam Ring	2	31	Nut M5	2
14	Aluminum Cam Wheel	1	32	Rotating Shaft	1
15	Screw M6 × 30	1	33	Aluminum Sliding Block	2
16	Spring Washer φ 6	1	34	Blade Holder	1
17	Washer φ 6	1	35	Blade	1
18	Handle	1	36	Screw 6 × 10	4